

Honolulu Star-Bulletin 1st EXTRA

Evening Bulletin, Est. 1887, No. 11287
Hawaiian Star, Vol. XLVIII, No. 15359

HONOLULU, TERRITORY OF HAWAII, U. S. A., SUNDAY, DECEMBER 7, 1941

★ PRICE FIVE CENTS

WAR!

(Associated Press by Transpacific Telephone)

SAN FRANCISCO, Dec. 7.—President Roosevelt announced this morning that Japanese planes had attacked Manila and Pearl Harbor.

OAHU BOMBED BY JAPANESE PLANES

SIX KNOWN DEAD, 21 INJURED, AT EMERGENCY HOSPITAL

Attack Made On Island's Defense Areas

By UNITED PRESS

WASHINGTON, Dec. 7. —Text of a White House announcement detailing the attack on the Hawaiian islands is:

"The Japanese attacked Pearl Harbor from the air and all naval and military activities on the island of Oahu, principal American base in the Hawaiian islands."

Oahu was attacked at 7:55 this morning by Japanese planes.

The Rising Sun, emblem of Japan, was seen on plane wing tips.

Wave after wave of bombers streamed through the clouded morning sky from the southwest and flung their missiles on a city resting in peaceful Sabbath calm.

According to an unconfirmed report received at the governor's office, the Japanese force that attacked Oahu reached island waters aboard two small airplane carriers.

It was also reported that at the governor's office either an attempt had been made to bomb the USS Lexington, or that it had been bombed.

CITY IN UPROAR

Within 10 minutes the city was in an uproar. As bombs fell in many parts of the city, and in defense areas the defenders of the islands went into quick action.

Army intelligence officers at Ft. Shafter announced officially shortly after 9 a. m. the fact of the bombardment by an enemy but long previous army and navy had taken immediate measures in defense.

"Oahu is under a sporadic air raid," the announcement said.

"Citizens are ordered to stay off the streets until further notice."

CIVILIANS ORDERED OFF STREETS

The army has ordered that all civilians stay off the streets and highways and not use telephones.

Evidence that the Japanese attack has registered some hits was shown by three billowing pillars of smoke in the Pearl Harbor and Hickam field area.

All navy personnel and civilian defense workers, with the exception of women, have been ordered to duty at Pearl Harbor.

The Pearl Harbor highway was immediately a mass of racing cars.

A trickling stream of injured people began pouring into the city emergency hospital a few minutes after the bombardment started.

Thousands of telephone calls almost swamped the Mutual Telephone Co., which put extra operators on duty.

At The Star-Bulletin office the phone calls deluged the single operator and it was impossible for this newspaper, for sometime, to handle the flood of calls. Here also an emergency operator was called.

HOUR OF ATTACK—7:55 A. M.

An official army report from department headquarters, made public shortly before 11, is that the first attack was at 7:55 a. m.

Witnesses said they saw at least 50 airplanes over Pearl Harbor.

The attack centered in the Pearl Harbor. Army authorities said:

"The rising sun was seen on the wing tips of the airplanes."

Although martial law has not been declared officially, the city of Honolulu was operating under M-Day conditions.

It is reliably reported that enemy objectives under attack were Wheeler field Hickam field, Kaneohe bay and naval air station and Pearl Harbor.

Some enemy planes were reported shot down.

The body of the pilot was seen in a plane burning at Wahiawa.

Oahu appeared to be taking calmly after the first uproar of queries.

ANTI-AIRCRAFT GUNS IN ACTION

First indication of the raid came shortly before 8 this morning when anti-aircraft guns around Pearl Harbor began sending up a thunderous barrage.

At the same time a vast cloud of black smoke arose from the naval base and also from Hickam field where flames could be seen.

BOMB NEAR GOVERNOR'S MANSION

Shortly before 9:30 a bomb fell near Washington Place, the residence of the governor. Governor Poindexter and Secretary Charles M. Hite were there.

It was reported that the bomb killed an unidentified Chinese man across the street in front of the Schuman Carriage Co. where windows were broken.

C. E. Daniels, a welder, found a fragment of shell or bomb at South and Queen Sts. which he brought into the City Hall. This fragment weighed about a pound.

At 10:05 a. m. today Governor Poindexter telephoned to The Star-Bulletin announcing he has declared a state of emergency for the entire territory.

He announced that Edouard L. Doty, executive secretary of the major disaster council, has been appointed director under the M-Day law's provisions.

Governor Poindexter urged all residents of Honolulu to remain off the street, and the people of the territory to remain calm.

Mr. Doty reported that all major disaster council wardens and medical units were on duty within a half hour of the time the alarm was given.

Workers employed at Pearl Harbor were ordered at 10:10 a. m. not to report at Pearl Harbor.

The mayor's major disaster council was to meet at the city hall at about 10:30 this morning.

At least two Japanese planes were reported at Hawaiian department headquarters to have been shot down.

One of the planes was shot down at Ft. Kamehameha and the other back of the Wa-

Hundreds See City Bombed

Hundreds of Honoluluans who hurried to the top of Punchbowl soon after bombs began to fall, saw spread out before them the whole panorama of surprise attack and defense.

Far off over Pearl Harbor the white sky was polka-dotted with anti-aircraft smoke.

Rolling away from the navy base were billowing clouds of ugly black smoke. Scattered a burst of flames reddened the black sources of the smoke.

Out from the silver-surfaced mouth of the harbor a flotilla of destroyers streamed to battle, smoke pouring from their stacks.

Turn to Page 2, Column 1

Names of Dead and Injured

The city emergency hospital reported at 10:30 a list of 6 killed and 21 injured.

The complete list will be worked later. Here is a partial list:

Peter Lopez, 34, of 2641 Kamehameha St., was reported at 8:30 a. m. to be in serious condition from wounds in the upper abdomen.

Bernice Goetts, 11, 1706 Kalili St., is suffering from a wounded thigh, laceration on the right leg and left arm.

A Portuguese girl, unidentified, 16 years old, died on arrival from puncture wounds.

Another victim who died on arrival was Frank Otsuki, 26, 2726 Kamehameha St., from puncture wounds in the chest.

Conelia Bradley, 21, Honolulu gardens, was released from the hospital after treatment for lacerations.

Three were reported injured and one reported killed from the bomb that fell at Fort and School Sts.

Schools Closed

All schools on Oahu, both public and private, will remain closed until further notice, Edouard L. Doty, territorial director of civilian defense, announced at 11 a. m. today. This does not apply elsewhere in the territory.

Editorial

HAWAII MEETS THE CRISIS

Honolulu and Hawaii will meet the emergency of war today as Honolulu and Hawaii have met emergencies in the past—calmly, calmly and with immediate and complete support of the officials, officers and troops who are in charge.

Governor Poindexter and the army and navy leaders have called upon the public to remain calm; for civilians who have no essential business on the streets to stay off; and for every man and woman to do his duty.

That request, coupled with the measures promptly taken to meet the situation that has suddenly and terribly developed, will be needed.

Hawaii will do its part—as a loyal American territory. In this crisis, every difference of race, creed and color will be submerged in the one desire and determination to play the part that Americans always play in crisis.

BULLETIN

Additional Star-Bulletin extras today will cover the latest developments in this war move.

Civilians Are Warned Off Street Today

Continued from Page 1

Wahiwa courthouse.
DAMAGE DONE AROUND THE CITY
 At 9:38 a. m., a live wire was reported down at Richards and Beretania Sts.
 At 9:42 a. m., Nuuanu above Vineyard, a gas line was leaking.
 At 9:44 a. m., at 2840 Kalihi St., a bomb in the road. There was a mysterious Japanese in a tent camped near there.
 At 9:45 a. m., at 2683 Pacific Heights Rd., a bomb struck a house.

REPORT AIRPLANE CRASHES, WAHIAWA
 It was reported that an airplane (nationality undisclosed) crashed near the Hawaiian Electric Co. plant at Wahiawa. It was destroyed by fire as were two houses near which it fell. The army and police flung a guarding cordon around the location and civilians were kept at a distance.

MANY INJURIES ARE REPORTED
 An unidentified army witness arriving at Hawaiian department headquarters about 9:30 reported that two oil tanks at Pearl Harbor were ablaze.
 A bomb was reported to have struck at 9:25 this morning near 624 Ala Moana.

At 8:25 a. m. the police department broadcast a statement to all officers to warn persons to leave the streets and return to their homes.
 All soldiers, sailors and marines off duty were ordered to report at once to their respective posts and stations.
 Residents were ordered by radio not to use their telephones.
 At 8:17 a. m. a Honolulu at Pearl Harbor gate heard marines ordered out.

BOMB HITS HOME IN DAMON TRACT
 At 8:05 a. m. according to a police report, a bomb crashed through the kitchen of the home of Thomas Fujimoto, 818 E. Rd. Damon tract, while the family of three was eating breakfast. No one was injured, according to the police.

According to another police report, several persons were injured by a bomb dropping in Kalihi St.
 At 8:10 a. m. a report was made to the police that a wave of five dive bombers attacked the oil tanks at Pearl Harbor, the planes flying as low as 100 feet.

At 8:10 a. m. the Pearl Harbor housing area was reported ordered evacuated.
 At 8:13 a. m. according to the police, two planes were reported to have dropped bombs on Pearl Harbor road.
 At 8:13 a. m. the police received a report that a house on Alewa Heights had been bombed.

At 8:17 a. m. Damon Tract residents, according to a police report, were ordered evacuated and the police said nearby residents were cooperating in helping them leave the area.
INCENDIARY BOMB AT FORT AND SCHOOL
 A wooden frame house was split in half by an incendiary bomb at Fort and School Sts. about 8:20 a. m.
 Fire department could not stop the flames.
 About 100 firemen are operating out of headquarters at Fort and Beretania Sts.
 All departments of the fire department have been called at headquarters.

At present, there are six companies operating.
 Three companies were sent to Hukam field this morning.
 The fire trucks are sent out to investigate a fire and after investigation and doing all possible to put it out, return to headquarters for the next assignment.

At 8:25 a. m. a bomb broke a power line at 624 Ala Moana.
 At 8:30 a. m. a man was injured at Richards and Beretania Sts.
 At 8:35 a. m. a sump, heavily laden, was reported off Muanala.
 At 8:36 a. m. a bomb fell at Kihou and Kikikau Ave. No one was hurt.

At 8:34 a. m. a Japanese plane was reported shot down at Wahiawa.
 At 8:32 a. m. a bomb fell near E. St. in Damon tract.
 At 8:36 a. m. a bomb hit on N. School St.
 At 8:50 a. m. all truck drivers and motor boat operators of the U. S. engineers and Hawaiian Constructors were ordered to report at Kewalo basin.

All legionnaires who are not on the emergency police force are being emergency police force were reporting to the police station.
 All legionnaires who are not on the emergency police force are being held at the legion clubhouse, Kapulani Blvd. for call.
 The emergency disaster council, headed by Maj. Robert Fox, was called and are at their posts at schoolhouses.
 Col. James R. Mahaffey and Joe McGettigan, coordinators, were on duty.

At 10:08 a. m. two Japanese were reported near the water tank at Sierra drive and Wilhelmina Rise.
 At 10:22 a. m. Yur Merimatu reported that his house at 134 Keolu St. was bombed. A five inch shell went directly through the house, injuring no one.
 A house at 1807 Liliha St. was reported bombed with no injuries.
 Police have been ordered to guard vital spots throughout the city where soldiers have not yet been stationed.

Defense Director Doty Names Four Island Directors
 At 8:10 this morning, the Hon. Earl D. Dwyer, giving the governor extraordinary powers, went into effect, and Mr. Doty was appointed territorial director of civilian defense.
 Mr. Doty in turn appointed T. G. Walker as director of civilian defense for Oahu; Lewis Herwick of Waiuku as Maui director; Robert Meier of Hilo as Hawaii director; and Charles Fern of Likiep as Kasal director.
 The latter three he commended with long distance telegrams.
 Mr. Doty's advice to the people was: "Everybody keep calm and keep off the streets and don't use telephones except in extreme emergencies. We must have clear communications."
 He said he had instructed the police to keep the streets clear and would soon issue necessary permits to allow necessary personnel to travel.

One Hurt as Bomb Hits Nisai Club
 One person was injured when a bomb fell on the 18 room Nisai clubhouse at 44 S. School St. Mrs. M. Sakamoto, who was in the kitchen when the bomb fell, was injured. The other occupants of the house were in the yard when the attack took place.

Hundreds See Bombardment
 Continued from Page 1
 About two sports of white spray shot up, as bombs fell close around them.
 The destroyers answered with blasts of their own, flame bursting from their guns.

Picks Up Shrapnel
 J. M. H. Kramer, employe of the Oahu Railway & Land Co., and fire warden at the O. R. & L. Co. pier, brought to The Star-Bulletin office two pieces of shrapnel, one of steel which he said he picked up at Pier 20 this morning.

PLAYFUL AMERICANS
 From department of commerce figures for the amount of money paid annually for toys, it may be assumed that about 220 out of every 1,000 of American income is spent for children's toys.

Highlights On Today's Attack

Japanese planes attacked Pearl Harbor early this morning.
 The attack was officially announced by President Roosevelt in Washington.
 Oil tanks were set afire.
 Governor Fuldener has declared a state of emergency exists.
 Early reports indicated that at least four people have been killed in the attack.
 Many others are injured.
 An enemy plane crashed in Wahiawa and set fire to two houses.
 A bomb fell near Washington place, the governor's residence.
 The governor was there but was not injured.
 Edward Doty has been named director of all civilian defense activities.

Ten or more persons were injured when a plane machine gunned the streets at Wahiawa.
 At least two Japanese planes were reported by the army to be shot down.
 Witnesses reported at least 36 planes were in the invading force.
 People asked to stay off streets and not to use telephones except in case of utmost necessity.

Roy Vitousek Chased By Enemy Plane
 Roy A. Vitousek, Honolulu attorney, was flying above John Rodgers airport early this morning when the attack occurred.
 He said some of the attacking planes chased him, but he successfully got away.
 He reported that Bob Tye, operator of a flying service at the airport, was about to turn the propeller on one of his planes when an attacking plane swooped low, strafing the airport and killing Tye, apparently with a .30 caliber machine gun bullet.
 Mr. Vitousek said the attacking planes were close enough so that he could clearly identify the pilot as Japanese.

Family is Strafed in Damon Tract
 B. Tibayan, Damon tract, reported his family was strafed by enemy planes after bombs fell in the vicinity of their home.
 He said he heard the bombs fall, Tibayan said, he took his family outside and a low flying plane strafed them. His small son was injured and is missing.

Traffic Commission Approves Off Street Parking at Night
 All night off street parking should be permitted in Honolulu, the traffic safety commission recommended at a late Friday meeting at the city hall.
 The recommendation will be submitted to the mayor and board of supervisors next Tuesday.
 The action was taken after some automobile owners had complained that they have no place to park their cars at night and that if they leave them on the street they are looted by police.
 The commission also voted to recommend that parking of cars on the makai side of Kamehameha highway from Halekou Rd. to the Coral Gardens road be permitted.
 Nearly everybody in England has grown something this year.

Planes Strafe The Streets Of Wahiawa

Wahiawa, Dec. 7.—Ten or more persons were injured when planes strafed the streets of Wahiawa about 7 this morning. Neither the identity of the injured persons nor the extent of their injuries was immediately available.
 The less seriously injured and those who could not be moved were taken to Dr. Merton H. Mack's office. Others were taken to the Kwa hospital.
 About 30 planes flew over Wahiawa at 8:30 this morning.
 One plane crashed into a row of houses and burned completely. Two houses were burned to the ground. The fire was brought under control by volunteers and a small fire engine from Waipahu.

ENTIRE STORE
OPEN EVENINGS
 'TIL CHRISTMAS
 RADIOS — PIANOS — RECORDS
 SHEET MUSIC — APPLIANCES
Bergstrom's
 1645 FORT ST. KEELEMAN'S BUILDING
 HAWAII'S LARGEST AND OLDEST MUSIC HOUSE

HERE'S THE BEST WAY TO SAY MERRY CHRISTMAS . . . WITH GIFTS OF Furniture

For the Man OF THE HOUSE
Club Chair With Ottoman
 Soft, luxurious comfort . . . in hard wearing tapestry and damask coverings. pleasing selection of colors. **\$49.50**

For the Lady OF THE HOUSE
Occasional Chairs
 Shik back occasional chairs . . . beautifully upholstered . . . designed particularly for the comfort of the ladies. **\$27.50**

TEA CARTS—with drop leaves and glass tray. Equipped with electrical outlets for the modern hostess. In natural bleached and mahogany finishes. **\$27.50**

BRIDGE SETS—Folding steel table and chairs—moisture resistant tops—the chairs have padded seats and backs. **\$17.50**

Bailey FURNITURE CO.
 1180-41 BISHOP TEL. 8000

Santa Says:

NOW for a MERRY CHRISTMAS

★
THE MEMBERS OF 1941 BANKOH SAVINGS CLUB
 are invited to call at this bank on or after **MONDAY, DECEMBER 8th** and receive the Christmas Funds which they have accumulated with interest, through this year

Bring Your Coupon Book With You
BANK of HAWAII

See and hear them now!

DON'T DELAY!

NEW 1942 GE RADIOS

Give the perfect gift this Christmas . . . a G.E. combination radio-phonograph. The model pictured is just one of the large selection you'll choose from . . . in a smartly styled American walnut veneer cabinet with a roll-out phonograph compartment. You'll get especially fine reception on the 7-tube (including rectifier) radio with a 14-inch dynapower speaker and feather-touch electric tuning keys. Receives Standard Broadcasts and Foreign Short Wave. Unusually fine record reproduction. **\$202.95**

Model LC-788

Model L-500 with wood mahogany plastic cabinet which won top award for styling in nationwide contest. Features AC or DC house current. Super-heterodyne circuit. Dynamic speaker and automatic volume control. **\$18.95**

Model L-600 comes equipped with built-in Beam-a-scope. Dynamic speaker and Super-heterodyne with Broadcast RF Stage brings in far-away stations strongly. Continental styled cabinet in mahogany plastic. AC and DC current. **\$23.50**

Model L-810 with Two built-in Beam-a-scope and dynamic speaker. Plays on AC current. Cabinet in American walnut and Brazilian veneers with light inlaid. An unusually popular model. **\$44.95**

Model L-640 with two built-in Beam-a-scope for American and foreign reception. Provision for record attachment. Feather-touch tuning and Visualis dial. Beautiful cabinet of walnut and maple veneers. **\$43.90**

W. A. RAMSAY, LTD.
 PALAMA APPLIANCES

DEATHS OVER 400 ON OAHU, LATEST REPORT

TOKYO ANNOUNCES "STATE OF WAR" WITH U. S. Japanese Raids On Guam, Panama Are Reported

Oahu Blackout Tonight; Fleet Here Moves Out to Sea

Four Waves, Start At 7:55, Oahu Hit In Many Places

BULLETIN

By The Associated Press

TOKYO, Dec. 7.—Imperial headquarters announced at 6 o'clock tonight that Japan had entered a state of war with the United States and Great Britain in the western Pacific from dawn today.

Honolulu and Oahu came through a baptism of fire today with calm and determination as wave after wave of Japanese bombers rained missiles all over the island.

At 3 this afternoon army, navy, the police and various civilian agencies were on a war footing, and faced possible further attacks with undaunted vigor and courage.

At 3 p. m. the police reported that, based on information from the city emergency hospital and the morgue there are 25 known dead and 56 known injured in the bombing raids.

In Washington President Roosevelt announced that the raids were by Japanese bombers.

A United Press dispatch at 3 this afternoon said that estimates given out at Washington are that 400 are dead and 300 injured of the army forces on Oahu alone.

Japanese raiding planes struck hardest at the army and navy bases, but the city of Honolulu itself suffered severe damage.

Deaths on Oahu are reported at more than 400, counting army and civilian fatalities. Navy casualties have not been announced.

Estimate of the army deaths was given out in a White House statement at Washington tonight.

REPORTS GUAM, PANAMA ATTACKED

Unconfirmed reports this afternoon based on fragmentary broadcast reports heard on mainland stations, were that both Guam and Panama had been attacked by the Japanese.

Press association dispatches mentioned possible attacks on Manila but there was no confirmation of this.

WASHINGTON, Dec. 7. (U.P.)—The White House tonight issued a preliminary estimate that 400 were dead and more than 300 wounded in the army forces alone on Oahu. Civilian casualties were not mentioned.

NEW YORK, Dec. 7. (U.P.)—NBC tonight heard the Panama radio broadcast that a Japanese aircraft carrier was sunk off Honolulu.

SHANGHAI, Monday, Dec. 8. (U.P.)—The Osaka Mainichi reported from Tokyo today that Japanese imperial headquarters announced a naval battle between the Japanese and the British and American fleets is going

Continued on Page 3, Col. 3

Governor Proclaims National Emergency

Governor Poindexter said he would make a full report to President Roosevelt of the bombing attacks on Honolulu by radio-telephone immediately after his radio message to the people of Hawaii.

The governor said at 11:30 that there had been no evidence of sabotage by local Japanese residents.

Governor Poindexter this morning issued the following proclamation declaring a defense period to exist throughout the territory: thereby putting into effect the provisions of the M-Day act of the special session of the legislature.

"Under and by virtue of the powers vested in me by Act 24 of the special session laws of Hawaii, 1941, and particularly Section 5 thereof, and under by virtue of all powers in me vested by law, I, J. H. Poindexter, governor of the territory of Hawaii, do hereby find that a state of affairs exist arising out of an attack upon the territory of Hawaii and that all of the circumstances make it advisable to protect the territory and its inhabitants as provided in and by said Act 24 of the special session laws of Hawaii, 1941, and all other laws relating thereto; and by reason of the foregoing:

"I do declare and proclaim a defense period to exist throughout the territory of Hawaii.

"This proclamation shall take effect upon promulgation thereof by official announcement by me by means of radio broadcast which I do further declare to have taken place at 10 o'clock a. m. on the date hereof, done at Honolulu, territory of Hawaii this 7th day of December 1941.

"Governor of the territory of Hawaii, Joseph B. Poindexter.

This hereby puts the M-Day bill into full effect.

Known Oahu Casualties

With eight persons dead upon arrival at the emergency hospital and at least 20 reported dead at Hickam field, the death toll from air attacks on Oahu this morning continued to mount after noon.

Two identified bodies, mangled by shrapnel, taken to the emergency hospital about 11 a. m. brought the total number dead there to eight.

- Dead at the emergency hospital included:
- DEAD
 - Portuguese girl, 10 years old, unidentified, puncture wound left temple.
 - Caribbean male, 25, unidentified, MAD initials on shirt.
 - Frank Okasaki, 26, puncture wound in chest, 2705 Kamehameki St.
 - Migita Taro, 26, Schofield.
 - Japanese girl, unidentified, age about 8, fur collar on coat only identification.
 - Mrs. White, 44, Dowsett Tract, puncture wound in chest.
 - Toshio Takasaki, 5, Peleolu lane, unidentified, 30 to 40.
 - Patrick J. Chung, 20, 1457 Fort St.
 - A report to the police early this afternoon was that two members of the provisional police were shot and killed by machine gun fire from low flying planes at Waipuu this morning.
 - INJURED
 - Joseph Akana, Chinese-Hawaiian, 27, Kapukuk.
 - George Nianley, 4, 1920 Colburn St.
 - Mrs. Ida Gevertz, 41, 2708 Kalihouka.
 - Kanehira Ito, 145-A Fort St.
 - Thomas Fajimara, 12, 815 I. Rd. Damon tract.
 - Eliot Cappa, 15, signal service corps, Ft. Shafter.
 - Ruth Sakamoto, 27, 64-C N. School St.
 - Alfred Mank, 20, 290th Infantry company D.
 - Irma Bradley, 15, Moenalu gardens.
 - Erville Bradley, 38, Moenalu gardens.
 - Harriet Ito, 20, 1322 Nuuanu ave.
 - Edwidge Bartels, U. S. district engineer.
 - M. Dallas, 18, headquarters 16th wing, Wheeler field.
 - Emile Wilson, 22, 1457 Fort St.
 - George Correa, company No. 1, fire department, was brought in injured from Hickam field and rushed to emergency hospital.
 - Albert Fong, 45, 627-E Waipa lane.
 - Yoshio Obara, 22, 1453 Fort St.
 - Stanley Carlson, 37, 2210 Kukui Ave.
 - Glen Nigaki, 21, Ft. Shafter.
 - Hurt in Second Raid
 - Persons injured in the second



BOMB DAMAGE: The interior of the Paul Gee home at Liliha and Koolani Sts., hit by a bomb.



WASHINGTON PLACE BOMB: The crater left by a bomb which fell in the grounds of Washington Place, the residence of Governor Poindexter, during the first raid today. It made a hole about 5 feet across and of the same depth.

BULLETINS

By THE UNITED PRESS

WASHINGTON, Dec. 7.—The White House announced tonight it feared there was heavy loss of life in Hawaii.

NEW YORK, Dec. 7.—The National Broadcasting Co. tonight reported 350 men killed in a direct hit on Hickam field, the army's giant air field on Oahu.

NEW YORK, Dec. 7.—NBC reported from Honolulu tonight that the battleship Oklahoma was set afire during the Pearl Harbor attack.

Military Censorship On All Messages

Hawaii was under strict emergency rule this afternoon, with close military censorship applied to all outgoing messages.

Governor Poindexter had talked with President Roosevelt by radio telephone and had acquainted him with all details of the attack on Oahu by waves of Japanese planes.

At least four attacks were made on Oahu. The first was at 7:55 a. m.; the second at 11:29; the third at 11:59 and the fourth at 12:11.

The governor received instructions from the president but declined to reveal what they were.

Meanwhile the death and injury toll increased with incidents being reported from widely scattered areas of the city.

Blackout For Oahu Ordered

A complete blackout on Oahu has been ordered for tonight, T. G. S. Walker, coordinator of the mayor's disaster committee, announced at 12:30 this afternoon.

The order was requested by the army, he said. He added that all civilians, except those with special permits, must stay off the streets at all times.

At 1:50 p. m. Edward B. L. Dwyer, territorial director of civilian defense, ordered a complete blackout every night until further notice.

The reasons for the partial blackout were said to be navigation, such as lights, beacons, light-houses, have been extinguished.

It also was announced that all movieing picture theaters have been ordered closed until further notice.

All householders are instructed to fill bath tubs and other receptacles with water in the event that the water works are damaged and unable to function.

Editorial

HAWAII MEETS THE CRISIS

Honolulu and Hawaii will meet the emergency of war today as Honolulu and Hawaii have met emergencies in the past—calmly, and with immediate and complete support of the officials, officers and troops who are in charge.

Governor Poindexter and the army and navy leaders have called upon the public to remain calm; for civilians who have no essential business on the streets to stay off; and for every man and woman to do his duty.

City Rocks To Blasts As Japanese Drop Bombs

(Associated Press by Transpacific Telephone)

SAN FRANCISCO, Dec. 7.—President Roosevelt announced this morning that Japanese planes had attacked Manila and Pearl Harbor.

Attack Made On Island's Defense Areas

By UNITED PRESS

WASHINGTON, Dec. 7.—Text of a White House announcement detailing the attack on the Hawaiian islands is: "The Japanese attacked Pearl Harbor from the air and all naval and military activities on the island of Oahu, principal American base in the Hawaiian islands."

Oahu was attacked at 7:55 this morning by Japanese planes.

The Rising Sun, emblem of Japan, was seen on plane wing tips.

Wave after wave of bombers streamed through the clouded morning sky from the southwest and flung their missiles on a city resting in peaceful Sabbath calm.

According to an unconfirmed report received at the governor's office, the Japanese force that attacked Oahu reached island waters aboard two small airplane carriers.

It was also reported that at the governor's office either an attempt had been made to bomb the USS Lexington, or that it had been bombed.

CITY IN UPROAR

Within 10 minutes the city was in an uproar. As bombs fell in many parts of the city, and in defense areas the defenders of the islands went into quick action.

Army intelligence officers at Ft. Shafter announced officially shortly after 9 a. m. the fact of the bombardment by an enemy but long previous army and navy had taken immediate measures in defense.

"Oahu is under a sporadic air raid," the announcement said.

"Civilians are ordered to stay off the streets until further notice."

CIVILIANS ORDERED OFF STREETS

The army has ordered that all civilians stay off the streets and highways and not use telephones.

Evidence that the Japanese attack has registered some hits was shown by three billowing pillars of smoke in the Pearl Harbor and Hickam field area.

All navy personnel and civilian defense workers, with the exception of women, have been ordered to duty at Pearl Harbor.

The Pearl Harbor highway was immediately a mess of racing cars.

A trickling stream of injured people began pouring into the city emergency hospital a few minutes after the bombardment started.

Thousands of telephone calls almost swamped the Mutual Telephone Co., which put extra operators on duty.

At The Star-Bulletin office the phone calls deluged the single operator and it was impossible for this newspaper, for sometime, to handle the flood of calls. Here also an emergency operator was called.

HOUR OF ATTACK—7:55 A. M.

An official army report from department headquarters, made public shortly before 11, is that the first attack was at 7:55 a. m.

Witnesses said they saw at least 50 airplanes over Pearl Harbor.

The attack centered in the Pearl Harbor, Army authorities said:

"The rising sun was seen on the wing tips of the airplanes."

Although martial law has not been declared officially, the city of Honolulu was operating under M-Day conditions.

It is reliably reported that enemy objectives

under attack were Wheeler field Hickam field, Kaneohe bay and naval air station and Pearl Harbor.

Some enemy planes were reported shot down.

The body of the pilot was seen in a plane burning at Wahiawa.

Oahu appeared to be taking calmly after the first uproar of queries.

ANTI-AIRCRAFT GUNS IN ACTION

First indication of the raid came shortly before 8 this morning when anti-aircraft guns around Pearl Harbor began sending up a thunderous barrage.

At the same time a vast cloud of black smoke arose from the naval base and also from Hickam field where flames could be seen.

BOMB NEAR GOVERNOR'S MANSION

Shortly before 9:30 a bomb fell near Washington Place, the residence of the governor. Governor Poindexter and Secretary Charles M. Hite were there.

It was reported that the bomb killed an unidentified Chinese man across the street in front of the Schuman Carriage Co. where windows were broken.

C. E. Daniels, a welder, found a fragment of shell or bomb at South and Queen Sts. which he brought into the City Hall. This fragment weighed about a pound.

At 10:05 a. m. today Governor Poindexter telephoned to The Star-Bulletin announcing he has declared a state of emergency for the entire territory.

He announced that Edouard L. Doty, executive secretary of the major disaster council, has been appointed director under the M-Day law's provisions.

Governor Poindexter urged all residents of Honolulu to remain off the street, and the people of the territory to remain calm.

Mr. Doty reported that all major disaster council wardens and medical units were on duty within a half hour of the time the alarm was given.

Workers employed at Pearl Harbor were ordered at 10:10 a. m. not to report at Pearl Harbor.

The mayor's major disaster council was to meet at the city hall at about 10:30 this morning.

At least two Japanese planes were reported at Hawaiian department headquarters to have been shot down.

One of the planes was shot down at Ft. Kamehameha and the other back of the Wahiawa courthouse.

DAMAGE DONE AROUND THE CITY

At 9:38 a. m., a live wire was reported down at Richards and Beretania Sts.

At 9:42 a. m., Nuuanu above Vinyard, a gas line was leaking.

At 9:44 a. m., at 2840 Kalihi St., a bomb in the road. There was a mysterious Japanese in a tent camped near there.

At 9:45 a. m., at 2683 Pacific Heights Rd., a bomb struck a house.

REPORT AIRPLANE CRASHES, WAHIAWA

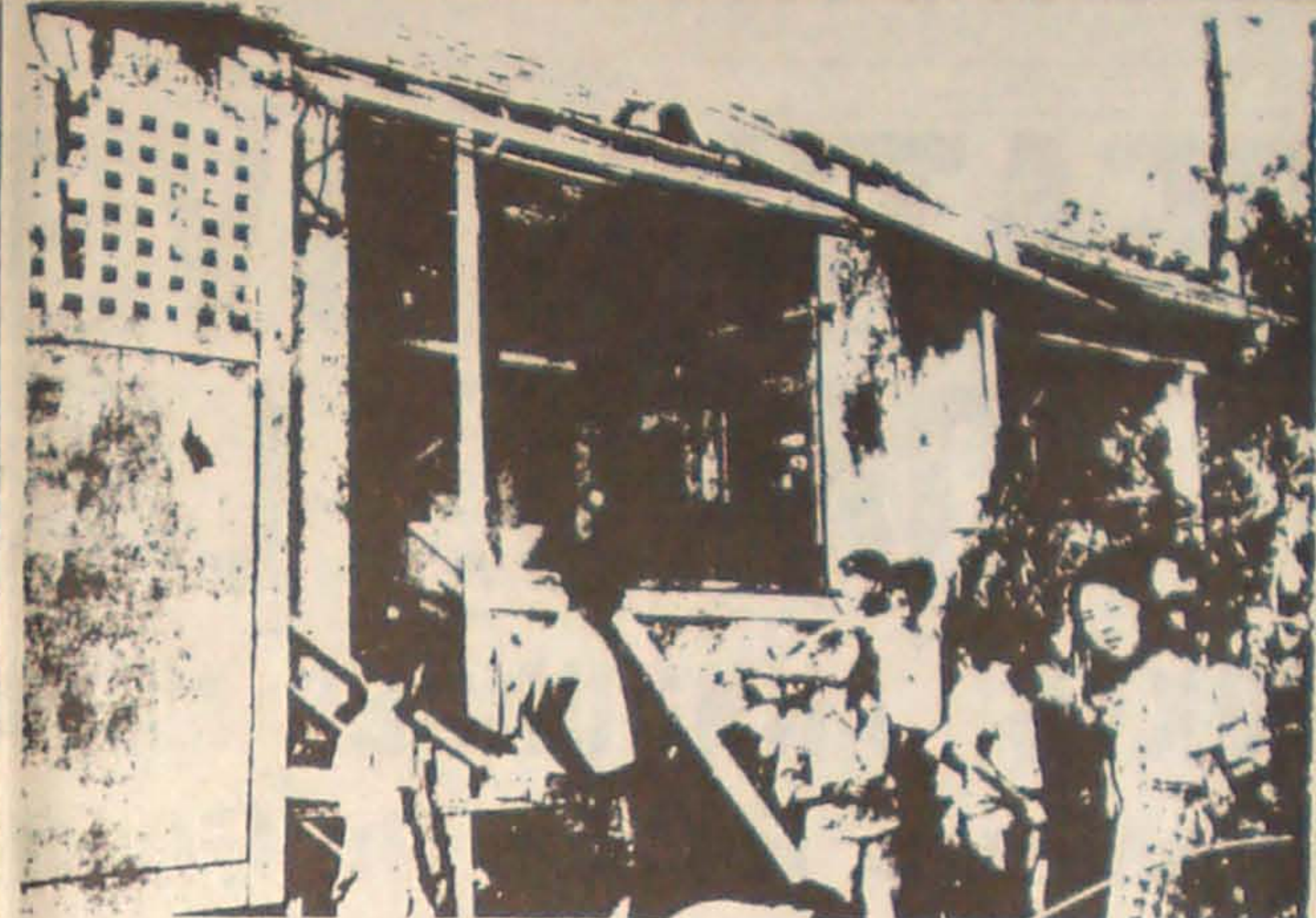
It was reported that an airplane (nationality undisclosed) crashed near the Hawaiian Electric Co. plant at Wahiawa. It was destroyed by fire as were two houses near which it fell. The army and police flung a guarding cordon around the location and civilians were kept at a distance.

MANY INJURIES ARE REPORTED

An unidentified army witness arriving at Hawaiian department headquarters about 9:30 reported that two oil tanks at Pearl Harbor were ablaze.

A bomb was reported to have struck at 9:25 this morning near 624 Ala Moana.

At 8:35 a. m. the police department broadcast a statement to all officers, sergeants and marines all duty were ordered to report at



PAUL GOO HOME STRUCK; Damage done by a Japanese bomb when it struck the home of Paul Goo at Liliha and Kuaikini Sts. this morning in the first raid on Oahu.

BULLETINS

Reported 'Dealt Successfully' With

WASHINGTON, Dec. 7. (AP)—Unconfirmed reports said tonight that United States forces "dealt successfully" with Japanese bombers over Hawaii and Manila.

Hull Accuses Japanese of Outright Lies

WASHINGTON, Dec. 7. (AP)—Secretary of State Cordell Hull tonight angrily told Saburo Kurusu and Kichiburo Nomura, Japanese negotiators, that their government's answer to his memorandum was "crowded with infamous falsehoods and distortions."

Hull's statement was read directly to Kurusu and Nomura after he read Japan's document handed to him at 1:25 p. m. EST. The state department thus far had not published the document. However, a departmental statement described the same as follows: "Hull carefully read the statement presented by the Japanese ambassador and with the greatest indignation said, 'I must say that in my 30 years of public service I have never seen a document that was more crowded with infamous falsehoods and distortions—on a scale so large that I never imagined until today that any government on this planet was capable of uttering them.'"

Attacks on Hawaii Understood Continuing

WASHINGTON, Dec. 7. (AP)—White House Secretary Stephen Early tonight issued a statement declaring that Japanese attacks are continuing so far as the U. S. government knows. Mr. Early said that the Honolulu and Manila attacks, according to reports received by the state department, were "at least in part" the work of the U. S. Navy and the U. S. Army. Mr. Early said the Japanese reply to Hull's memorandum.

U. S. Army Transport Reported Torpedoed

WASHINGTON, Dec. 7. (AP)—An army transport was torpedoed 1,300 miles west of San Francisco, it was announced tonight.

Naval Engagement Reported Off Honolulu

NEW YORK, Dec. 7. (AP)—The National Broadcasting Company tonight reported a naval engagement in progress off Honolulu.

6 Workers, 4 Subs Reported Sunk

WASHINGTON, Dec. 7. (AP)—It was reliably reported tonight that six workers and four submarines were killed by six Japanese planes and four submarines during the Hawaii action.

Residents were ordered by radio not to use their telephones. At 8:17 a. m. a Honolulu at Pearl Harbor gate heard marines ordered to their respective posts and stations.

BOMBS HIT HOME IN DAMON TRACT

At 8:05 a. m., according to a police report, a bomb crashed through the eaves of the home of Thomas Fujimoto, 810 E. Rd., Damon tract, while the family of three was eating breakfast. No one was injured, according to the police.

According to another police report, several persons were injured by a bomb dropping in Kalihi St. At 8:10 a. m. a report was made to the police that a wave of five dive bombers attacked the oil tanks at Pearl Harbor, the planes flying as low as 100 feet.

At 8:15 a. m. the Pearl Harbor housing area was reported ordered evacuated. At 8:15 a. m., according to the police, two planes were reported to have dropped bombs on Pearl Harbor road.

At 8:15 a. m., the police received a report that a house on Alewa Heights had been bombed. At 8:17 a. m., Damon Tract residents, according to a police report, were ordered evacuated and the police said nearby residents were cooperating in helping them leave the area.

INCENDIARY BOMB AT FORT AND SCHOOL

A wooden frame house was split in half by an incendiary bomb at Fort and School Sts., about 8:20 a. m. Fire department could not stop the flames.

About 100 firemen are operating out of headquarters at Fort and Beretania Sts. All departments of the fire department have been called at headquarters.

At present, there are six companies operating. These companies were sent to Hickam field this morning. The fire trucks are sent out to investigate a fire and after investigating and doing all possible to put it out, return to headquarters for the next assignment.

At 8:25 a. m. a bomb broke a power line at 825 Ala Moana. At 8:27 a. m. a man was injured at Richards and Beretania Sts. At 8:27 a. m. a sump, heavily laden, was reported off Moanalua. At 8:30 a. m. a bomb fell at Kuleho and Kikakahi Ave. No one was hurt.

At 8:34 a. m. a Japanese plane was reported shot down at Wahiawa. At 8:35 a. m. a bomb fell near E. St. in Damon tract. At 8:36 a. m. a bomb hit on N. School St. At 8:36 a. m. all truck drivers and motor boat operators of the U. S. Army and Hawaiian Constructors were ordered to report at Kewalo engine house.

All policemen who are not on the emergency police force are being assigned police force were reporting to the police station. All policemen who are not on the emergency police force are being assigned to the legion clubhouses, Kapolei Blvd., for call. The emergency disaster council, headed by Maj. Robert Foss, was in session at their posts at schoolhouse.

At 8:38 a. m. two Japanese were reported near the water tank at Beretania and Wilhelmina Rise. At 8:38 a. m., Yus Marimatas reported that his house at 758 Kaalea was bombed. A five inch shell went directly through the house. At 8:40 a. m. no one injured. At 8:40 a. m. a bomb was reported exploded with no injuries. Plans have been ordered to guard vital spots throughout the city where bombs have not yet been detected.



SHRAPNEL: A piece of shrapnel, picked up on a downtown street, is held by Mrs. Olga Burns.

Guam Bombed; Attack on Manila Reported Repulsed

Paul Findelsen, radio editor of The Star-Bulletin, while listening in by shortwave this afternoon at his home at 2512 Waiantala Ave., reports the following news items received by broadcast: "The island of Guam was subjected to a bombing attack this afternoon."

The Japanese also attempted to take Cavite in the Philippine islands but the attack was successfully repulsed. Manila denies any reports of damage to that city.

Mokapu Attacked

A Mokapu resident reporting at Island police for emergency duty reported the first bomb at 8:10 a. m. today took the Kaneohe bay naval air base there completely by surprise and struck and set on fire a large hangar moored on the eastern side of the hangars on the bay.

Bombs exploded on tanks causing such a conflagration that the hangar could not be seen but it is certain that they were in great danger. Another plane was struck and set on fire at Kokokahi near the coral cisterns.

A witness reported that there was no answering gunfire from the base and no planes went up to drive off the attackers. As the enemy planes swooped low and machine gunned the base scattered rifle fire was directed against them.

Witnesses said the Japanese machine gunners' marksmanship was very poor. HRT Buses Run on Reduced Schedule

Addison E. Kirk, president and general manager of the Honolulu Rapid Transit Co., reported that although there were several hits by bombs on overhead power wires, the company is running its buses on a reduced schedule.

A guard patrolling a water tank at Diamond Head street reported he had observed a suspicious group of Japanese at a Missouri Ave. address at 3 p. m. and a squad of police was sent in investigation. Nearly everybody in England has given something this year.

Parachutists Land on Oahu, Army Reports

Parachutists in camouflage uniforms and red shields have landed on Oahu, army authorities reported to police at 1:10 this afternoon.

Parachutist Report Is Probed By Police

An unidentified parachute was seen to land at St. Louis Heights about 3 p. m. It was reported. Lookouts reported to the police within five minutes and an investigation was started. Sixteen provisional policemen and all regular patrolmen in that district were ordered to proceed to the area behind St. Louis college and make a search. Police have been instructed to shoot on sight. The landing was made at Mableton, according to the report.

Suspicious Group Probed By Police

A guard patrolling a water tank at Diamond Head street reported he had observed a suspicious group of Japanese at a Missouri Ave. address at 3 p. m. and a squad of police was sent in investigation. Nearly everybody in England has given something this year.

Honolulu Star-Bulletin 3rd-EXTRA

Evening Bulletin, Est. 1882, No. 11278
Kawalep, Star, Vol. XXVIII, No. 13288

8 PAGES—HONOLULU, TERRITORY OF HAWAII, U. S. A., SUNDAY, DECEMBER 7, 1941—8 PAGES

*** PRICE FIVE CENTS

MARTIAL LAW DECLARED; DEATHS ARE MOUNTING

OVER 400 KILLED HERE; JAPAN ANNOUNCES "WAR"

Japanese Raids On Guam, Panama Are Reported

Oahu Blackout Tonight; Fleet Here Moves Out to Sea

Four Waves, Start At 7:55, Oahu Hit In Many Places

BULLETIN

By The Associated Press

TOKYO, Dec. 7.—Imperial headquarters announced at 6 o'clock tonight that Japan had entered a state of war with the United States and Great Britain in the western Pacific from dawn today.

Honolulu and Oahu came through a baptism of fire today with calm and determination as wave after wave of Japanese bombers rained missiles all over the island.

At 3 this afternoon army, navy, the police and various civilian agencies were on a war footing, and faced possible further attacks with undaunted vigor and courage.

At 3 p. m. the police reported that, based on information from the city emergency hospital and the morgue there are 25 known dead and 56 known injured in the bombing raids.

In Washington President Roosevelt announced that the raids were by Japanese bombers.

A United Press dispatch at 3 this afternoon said that estimates given out at Washington are that 400 are dead and 300 injured of the army forces on Oahu alone.

Japanese raiding planes struck hardest at the army and navy bases, but the city of Honolulu itself suffered severe damage.

Deaths on Oahu are reported at more than 400, counting army and civilian fatalities. Navy casualties have not been announced.

Estimate of the army deaths was given out in a White House statement at Washington tonight.

REPORTS GUAM, PANAMA ATTACKED

Unconfirmed reports this afternoon based on fragmentary broadcast reports heard on mainland stations, were that both Guam and Panama had been attacked by the Japanese.

Press association dispatches mentioned possible attacks on Manila but there was no confirmation of this.

WASHINGTON, Dec. 7. (U.P.)—The White House tonight issued a preliminary estimate that 400 were dead and more than 300 wounded in the army forces alone on Oahu. Civilian casualties were not mentioned.

NEW YORK, Dec. 7. (U.P.)—NBC tonight heard the Panama radio broadcast that a Japanese aircraft carrier was sunk off Honolulu.

SHANGHAI, Monday, Dec. 8. (U.P.)—The Osaka Mainichi reported from Tokyo today that Japanese imperial headquarters announced a naval battle between the Japanese and the British and American fleets is going

Governor Proclaims National Emergency

Governor Poindexter said he would make a full report to President Roosevelt of the bombing attacks on Honolulu by radiophones immediately after his radio message to the people of Honolulu.

The governor said at 11:38 that there had been no evidence of sabotage by local Japanese residents.

Governor Poindexter this morning issued the following proclamation declaring a defense period to exist throughout the territory; thereby putting into effect the provisions of the M-Day act of the special session of the legislature:

"Under and by virtue of the powers vested in me by Act 24 of the special session laws of Hawaii, 1941, and particularly Section 5 thereof, and under by virtue of all powers in me vested by law, I, J. B. Poindexter, governor of the territory of Hawaii, do hereby find that a state of affairs exist arising out of an attack upon the territory of Hawaii and that all of the circumstances make it advisable to protect the territory and its inhabitants as provided in and by said Act 24 of the special session laws of Hawaii, 1941, and all other laws relating thereto; and by reason of the foregoing:

"I do declare and proclaim a defense period to exist throughout the territory of Hawaii.

"This proclamation shall take effect upon promulgation thereof by official announcement by me by means of radio broadcast which I do further declare to have taken place at 10 o'clock a. m. on the date hereof, done at Honolulu, territory of Hawaii this 7th day of December 1941.

"Governor of the territory of Hawaii, Joseph B. Poindexter.

This hereby puts the M-Day bill into full effect.

Civilian Casualties

With 31 reported dead and 66 injured at 4 this afternoon, belated reports of casualties in today's bombing raids continued to be received from widely scattered districts of the city.

The following list includes casualties reported by the emergency hospital and others which have been reported to The Star-Bulletin from other sources.

Dead at the emergency hospital included:

DEAD

Portuguese girl, 16 years old, unidentified, puncture wound left temple.

Canadian male, 35, unidentified, head injury on chest.

Frank Ohashi, 28, puncture wound in chest, 2105 Kamaoiki St.

Migita Taro, 28, Schofield.

Japanese girl, unidentified, age about 8, fur collar on coat only identified.

Mrs. M. D. White, 44, Dr. West street, puncture wound in chest.

Tochio Takasaki, 5, Peleia lane, unidentified, 30 to 40.

Patrick J. Cheng, 35, 1457 Fort St.

Peter Lopez, 34, 2941 Kananani St.

Bob Tyler, operator of a flying service at John Rodgers airport.

William Cheng.

Paul Inamine.

Philip Eldred.

Frank Oshiro.

Ohashi.

Pikama.

Joe McEabe.

Joseph Iwami.

Migita Taro.

INJURED

John Diaz, 35, 1507 Miller St.

Maeda Gih, 16, 323 C, Navy Hospital.

Kenneth Heale, 1, 658 Web Lane.

Joseph Akana, Chinese-Hawaiian.

George Stanley, 4, 1920 Colburn St.

Mrs. Ida Goveale, 41, 2706 Kalini, Oahu.

Kaneshiro Ika, 145-A Fort St.

Thomas Fujimura, 13, 810 I Rd.

Damon Iwaki.

Elton Capps, 19, signal service corps, Ft. Shafter.

Ruth Sakamoto, 27, 44 C-H School St.

Alfred Wank, 30, 390th Infantry company D.

Levor Bradley, 15, Menehune garden.

Cecilia Bradley, 38, Menehune garden.

Harriet Ida, 20, 1332 Nuuanu Ave.

Rudolph Bartels, 17, A district engineer.

R. Dallas, 16, Signal Corps 12th wing, Wheeler field.

Kenzie Wilson, 22, 1457 Fort St.

George Correa, company No. 1, fire department, was brought in injured from Hickam field and rushed to emergency hospital.

Albert Fong, 45, 627-E Waipa lane.

Tochio Ogura, 23, 1453 Fort St.

Ridney Carlson, 37, 2210 Kubiki Ave.

Glen Hinale, 21, Ft. Shafter.

Persons injured in the second raid, taken in the emergency hospital, were:

Lee Kanda, 30, 1430 Lelehua lane.

Mildred Irvine, 1113 Duval St.

Charles Hartman, no address.

John Kim, 509 Akono lane.

Edward Lillike, 1282 Ala Moana.

Samuel Costa, 35, 1921 Colburn St.

Tony Oshiro, 20, 944 McCully St.

Alfred La Farge, 38, 807 Mokuauia St.

Unidentified female, no age, no address, both legs amputated.

Tochio Kanda, no age, no address.

Elton.

R. Isami, 19, Peleia lane.

Abel Gleason, 32, Lelehua lane.

Tochio Takasaki, Peleia lane.

K. Tochio, no address.

James Kanda, Kikiki St.

Matthew Kikuchi, 38, 2813 K.

Miki St., discharged.

Kishiro Tamasaka, 24, 50 Peleia lane.

Janice Koga, 20, Kuku St.

Teresa Kowalski, 18, 19 Peleia lane.

Eddie Kazar, 38, 149 N. Vineyard St.

Warren Tong, 18, 911-R Euka St.

Nisao Iyone, 20, 15 Palua St.

Yoshiro Tochioaka, no age, 10 Peleia lane.

Mida Kessler, 42, 970 Kawaiahi St.

Unidentified, 25, no address, male.

Abraham Kaala, 5, 1920 Colburn St.

Ellen Kanda, 11, 1430 Lelehua.

An unidentified 15-year old girl, Oahu today.

Turn to Page 2, Column 1.

Mrs. M. D. White Killed in Raid

Mrs. Mildred D. White, in charge of the filing department of the Hawaiian Sugar Planters' association and with that organization during the past 14 years, was among those killed during the bombing of Oahu today.

Her husband is an attorney, the family home is at 44 Lelehua Ave. where Mrs. White's death occurred this morning. It was not known whether her death resulted by a bomb or shrapnel.

MARTIAL LAW

Lt. General Walter C. Short, commanding general of the Hawaiian department, issued the following statement at 3:45 p. m. today:

"Governor Poindexter has just proclaimed martial law. All civilian governmental agencies will continue to function under the governor.

"Today the Hawaiian islands were attacked by Japanese airplanes.

"Although a state of war exists, the civilian population of these islands has reacted in a calm and satisfactory manner.

"The army demands the aid and assistance of every person in the territory.

If you are ordered by military personnel to obey a certain command, that order must be obeyed instantly and without question.

"Avoid the slightest appearance of hostility either in words or in act.

"Certain enemy agents have been apprehended and detained.

"Citizens who go about their regular duties have nothing to fear.

"All citizens are warned to watch their actions carefully, for any infraction of military rules and regulations will bring swift and harsh reprisals.

"Prisoners, when captured, will be turned over to the nearest military patrol, military guardhouse, police patrol or police station.

"Information regarding suspicious persons will be telephoned to the provost marshal at Honolulu 2948.

"A complete blackout of the entire territory will go into effect at nightfall tonight.

"Anyone violating the blackout by showing a light will be summarily dealt with.

"All civilian traffic except in case of dire emergency, will cease at dark.

"In this emergency, I assure you that the armed forces are adequately dealing with the situation and that each and everyone of you can best serve his country by giving his whole hearted cooperation to the military and civilian governments.

"Further instructions regarding civilians will (Continued on Page 4, Col. 1 & 2)

BULLETINS

By THE UNITED PRESS

WASHINGTON, Dec. 7.—The White House announced tonight it feared there was heavy loss of life in Hawaii.

NEW YORK, Dec. 7.—The National Broadcasting Co. tonight reported 350 men killed in a direct hit on Hickam field, the army's giant air field on Oahu.

NEW YORK, Dec. 7.—NBC reported from Honolulu tonight that the battleship Oklahoma was set afire during the Pearl Harbor attack.



WHERE MAN WAS KILLED: A window of the Schuman Carriage Co., opposite Washington Place, was smashed by a Japanese bomb this morning and a man identified as Patrick J. Cheng was killed.

Blackout For Isles Ordered

A complete blackout of the territory has been ordered for tonight, T. G. S. Walker, coordinator of the mayor's disaster committee, announced at 12:30 this afternoon.

The order was requested by the army, he said.

He added that all civilians, except those with special permits, must stay off the streets at all times.

At 1:30 p. m. Edward R. L. Dore, territorial director of civilian defense, ordered a complete blackout every night until further notice.

The captain of the port announced that all aids to navigation, such as lights, buoys, light-buoys, have been extinguished.

It also was announced that no vessel will be permitted to move without special permission from the captain of the port.

Another order said that all owners of alien-owned small craft have been rebuked.

This means that all alien-owned small craft are subject to seizure.

Mr. Dore said the civilian population is advised to keep radios on 24 hours a day and all orders would be read over the radio.

He also announced that all moving picture theaters have been ordered closed until further notice.

All householders are instructed to fill bath tubs and other receptacles with water in the event that the water works are damaged and unable to function.

Editorial

HAWAII MEETS THE CRISIS

Honolulu and Hawaii will meet the emergency of war today as Honolulu and Hawaii have met emergencies in the past—calmly, calmly and with immediate and complete support of the officials, officers and troops who are in charge.

Governor Poindexter and the army and navy leaders have called upon the public to remain calm; for civilians who have no essential business on the streets to stay off; and for every man and woman to do his duty.

That request, coupled with the measures promptly taken to meet the situation that has suddenly and terribly developed, will be needed.

Hawaii will do its part—as a loyal American territory.

In this crisis, every difference of race, creed and color will be submerged in the one desire and determination to play the part that Americans always play in crisis.

Civilians Wounded By Bombs, Machine Guns



DAMAGE DOWNTOWN: The Lavers & Cooke store was damaged by a bomb today, windows being blown out.

U. S. Fleet Steams To Sea Ready To Attack Enemy

Continued from Page 1
on "in the western Pacific."

By UNITED PRESS

The United States fleet steamed from Pearl Harbor Sunday after a Japanese dive bomber, torpedo plane and parachute raid on the great American naval and air base, causing heavy loss of life and property damage in an unprovoked assault which precipitated a general war in the Pacific.

Reportedly the sound of gunfire was heard off Oahu and gun flashes were seen.

The White House confirmed reports of heavy damage and casualties in Pearl Harbor and also announced that the navy reported to President Roosevelt an unidentified squadron of airplanes was sighted off Guam.

The White House said it was unable to confirm reports of an attack on Manila.

Reportedly Hawaiian officials have been expecting the attack for about a week and gave the raiders a warm reception.

SEVERAL PLANES ARE SHOT DOWN

Attacking planes, several of which were reported shot down, clearly bore the insignia of the rising sun.

Hickam field appeared to be the principal objective, but fires were also started on Ford island in the middle of the harbor.

Reportedly 50 planes attacked later and parachute troops were sighted. However, the parachutists were believed handled.

The National Broadcasting Co. said 350 were killed in a direct bomb hit on Hickam field.

The battleship Oklahoma, according to NBC, was also reported attacked and set afire in Pearl Harbor.

Governor Joseph Poindexter of Hawaii declared a state of emergency and the islands operated under a prearranged plan.

Meanwhile, at Washington President Roosevelt conferred with the cabinet and then summoned congressional leaders. It was believed Mr. Roosevelt was preparing a message to a joint session of congress asking a declaration of war—which was expected to pass as soon as asked.

COMPLETE CENSORSHIP ESTABLISHED

The navy established censorship immediately on all outgoing cable and radio messages.

Army and navy posts throughout the nation were mobilized. Secretary of War Henry L. Stimson and Secretary of Navy Frank Knox ordered army and navy men to wear uniforms at all times.

DAMAGE AT PEARL HARBOR

Huge fires were raging at Pearl Harbor at 1:10 this afternoon and five navy vessels appeared to have been destroyed in the air raids.

One ship had turned over on its side. Fires raging on four other warships appeared to be gaining in intensity and they had settled low in the water.

The base itself apparently was extensively damaged in the raids and great clouds of smoke rose above it.

Patrols were scouring the hills above Pearl Harbor for parachute troops reported to have been seen in the vicinity.

The Panama government ordered arrest of all Japanese nationals.

STIMSON ORDERS ARMY INTO UNIFORM
WASHINGTON, Dec. 7. (U.P.)—Secretary of War Henry L. Stimson today ordered the entire U. S. army into uniform—1,500,000 men, including thousands of officers and men on duty in administrative posts and heretofore have been allowed civilian clothes.

GERMANS REPORT TOKYO WAR ANNOUNCEMENT
BERLIN, Monday, Dec. 7. (U.P.)—The official DNB news agency reported from Tokyo today that "according to the Tokyo radio Japanese military headquarters announced on Monday at 4 a. m. between Japan and British and United States forces in the Pacific."

ADMIRAL HART SAYS U. S. JAPAN AT WAR
MANILA, Dec. 7. (U.P.)—Admiral Thomas Hart announced tonight that the United States was at war with Japan and "taking steps accordingly."

Some planes or ships had not yet been sighted. Street lights were burning in the capital, but the city was quiet. Newspaper editors had not yet appeared on the streets.

Sleepy-eyed army and navy intelligence officers were informed by the United Press of the Japanese attack on Oahu.

At first they were skeptical of the reports, especially when "it doesn't make sense."

The United Press flash here was apparently ahead of the army and navy radio.

Admiral Hart and Lt. Gen. Douglas MacArthur immediately issued full mobilization orders.

A box 6067 Honolulu, Hawaii 96818



WHERE MAN WAS KILLED: A window of the Schuman Carriage Co., opposite Washington Place, was smashed by a Japanese bomb this morning and a man identified as Patrick J. Chong was killed.

Bombs Hit Many Sections of City

Bombs rained from the skies on many sections of Honolulu this morning during the Japanese air attacks.

A bomb fell about 200 feet from Iolani palace during the second bombing raid at 11:30.

Observers estimated it was about a 25 pound bomb.

It left a crater in the capital lawn near the tree planted by President Roosevelt when he visited Hawaii several years ago.

The bomb landed about 200 feet from the mauka waikiki corner of the capital.

Bombs which fell at Hauuli and McCully Sts. apparently were incendiary bombs and caused damage to the street.

Another hit the motor pool at Ft. Armstrong. The fire was quickly brought under control by civilian and army firemen.

Another bomb fell at Nuuanu Ave. and Kukul St. at 11:35 a. m. and a fire also reported at a house at 734 McCully St.

A fire was reported at the Hawaiian Gas Products Co.

At 12:15 p. m. Lunalia school was reported on fire and a live wire was reported down at 940 Punahou St.

Additional bombings were reported from 1112 Duval St. Washington intermediate school, 2113 Bingham St. Juad St. at Iolani school where a bomb hit an automobile containing four persons.

At 11:35 a time bomb was reported at the upper end of Henry St.

Other bombings were reported at 1842 Kawahala St. at 734 McCully St. where a house was reported afire and at 64 Wylie St. In the first attack of the morning what was evidently a small bomb struck at Lewers Rd. and Kewala St. leaving a small hole in the street, shattering a palm tree and shattering the windows and doors of nearby apartment houses.

At 1:30 p. m. bombs on Kaimahama, the 47th reported several incendiary bombs. Had fallen in that vicinity.

Casualties

Continued from Page 1
A girl with a mangled left leg and shock in critical condition, was taken to the Children's hospital.

Yoshiko Tomioka, 8, was taken from 1497 River St. to the Japanese hospital.

Fire Chief William Benedetti has been injured by shrapnel in his head and legs at Hickam field. Frederick Malaret, Hickam fireman, injured by shrapnel in the leg and stomach, was taken to Tripler hospital.

Bernice Geertz, 12, 2708 Kalili St.
Peter Lopez, 34, 3741 Kamaoani St.
Mildred Geertz, 12, 2708 Kalili St.
Unidentified woman, address unknown.

Unidentified Japanese man, 38 years old.
Mildred Chen, 21, 2113 Coyne St.
Mildred Davis, 8, Ft. Roger.
Oliver Sabers, 4, 22 Palms lane.
Edmond Kapaolone, 4, 1385 Ka-mauwili lane.
LARRY CARTER, 4, 714 15th St.
BERRY HUNTING.
One female, 30, 1830 Prince lane.
Unidentified Japanese boy, 8, address unknown.
Unidentified Japanese girl, 1, address unknown.
John Hayes, 21, 3012 Democrat St.
Nellie Foster, 13, 3058 Ohiwala St.
B. Marlowe, 34, 951 Kokoia lane. Laceration of the head.

Japan Consul Raided

WASHINGTON, Dec. 7. (U.P.)—The Japanese embassy late today started burning secret documents. There was no police protection in front of the embassy.

A dramatic raid on the Japanese consulate this morning by detectives and police caught the staff of the consulate in the act of burning secret documents.

Police officers from one of the four police units who had been assigned to guard the Nuuanu St. consulate building, Van Kuren, chief of detectives, and Lt. Yoshio Hasegawa to force their way into the consulate office where a great fire was burning through the documents.

Hasegawa, consul general, was being interviewed by a Star-Bulletin reporter on the steps behind the consulate office when the car carrying the detectives entered the grounds at 11:30.

Lt. Hasegawa rushed up the steps, the men following him, past the consul general and into the hallway of the consulate office.

Inside the building the smell of burning paper was strong and in a moment the detectives had forced their way into a rear room, completely surprising three consular staff members who were grouped around a small fire on which were burning records and documents.

Several workers in this room were wide open and apparently the consular workers were taking out records and burning them as fast as possible.

A police guard stationed at the consulate in the small burning paper which prompted him to call the detectives.

Two carloads of detectives were dispatched. When the detectives broke into a back room, they found a smoke-filled room with doors and windows tightly locked and apparently set. It was burning on an over-stuffed washbasin with buckets of water nearby to extinguish the flames.

Detectives threw water on the burning documents and carefully searched all consulate personnel, including the consul general. Several were in other rooms.

Throughout the raid, neither the consul general nor his staff resisted. Though one of them cussed, evidently resenting the what he believed unjust intrusion and handling.

Four regular police and provisionally guards were sent at 10:30 this morning to guard the consulate.

They patrolled outside the consulate grounds on Nuuanu Ave. and Kukul St. and also were stationed on the grounds.

One of them remarked after the raid that though he suspected "something" was going on inside the consulate office, he did not have authority to break in.

The raid interrupted an interview in which the consul general urged the Japanese people in the islands "to remain calm and law abiding."

In the morning, at another interview, he said he had thought the bombing of Honolulu was "maneuvers" by the U. S. navy here.

When informed that there were allies, he remained unconvinced of the bombing by Japanese planes, but he was taken place.

Mr. Bartlett, international family, expressed surprise and disbelief when told that "this bombing" of Japanese banks was taken place this morning. It was reported at the consul's office.

Palama Station Reports 5 Dead

The deaths were reported up to 10:30 p. m. at the Palama settlement at the station as a result of the Japanese plane attack this morning.

A 65-year-old Malinda Paufala from a bullet wound in the lung died at her home on 2206 Denison St. near Lanikai park.

The bodies of remaining four were buried up to this afternoon.

They were believed to be Hawaiian.

Governor Has Instructions From President

Governor Poindexter talked to President Roosevelt by long distance telephone today noon and received certain confidential orders from the chief executive.

The governor said that the president had already heard the news, but was intensely interested as he explained the situation more fully.

The president was pleased at the attitude of the civilian population when he was told that civilian morale was high and defense organization was functioning smoothly.

When informed that there were casualties, he remained unconvinced that the bombing by Japanese planes had actually taken place.

"I heard a lot of gunfire but I didn't get up till late," he said, at the Japanese consulate where he was asked for a statement by The Star-Bulletin.

"I heard quite a lot of noise this morning but I never imagined that this was a real bombing," Mr. Okuda said.

Blood Donors Are Called In

T. G. S. Walker, civilian defense coordinator, asked that blood donors report immediately to Queen's hospital when 11 members in formation of five and six planes dropped five bombs into the west loch.

Another bomb hit the bow of the loch to be a light cruiser and took the bow off.

Shortly after that a single plane strafed the road with his machine gun.

A moment after he had done this bystanders could see his motor stop and as the plane went out of control he crashed into the inferno that was the oil tanks.

West Loch Is Under Attack

A Pearl Harbor worker reporting to the capital for emergency duty reported that at 7:45 he was just opposite the Pearl Harbor basin when 11 bombers in formation of five and six planes dropped five bombs into the west loch.

Another bomb hit the bow of the loch to be a light cruiser and took the bow off.

Shortly after that a single plane strafed the road with his machine gun.

A moment after he had done this bystanders could see his motor stop and as the plane went out of control he crashed into the inferno that was the oil tanks.

Gas Company Tank Is Hit

A Honolulu Gas Co. tank at Iwilei was struck at 11:40 this morning.

The tank was struck by a bomb which caused a fire and explosion.

The tank was struck by a bomb which caused a fire and explosion.

The tank was struck by a bomb which caused a fire and explosion.

The tank was struck by a bomb which caused a fire and explosion.

Schools Closed

All schools on Oahu, both public and private, will remain closed until further notice, Edward L. Dwyer territorial director of civilian defense, announced at 11 a. m. today. This does not apply elsewhere in the territory.

Principals of schools have been instructed by Mr. Dwyer to stand by with staffs of teachers on 24 hour shifts to make the buildings available to be used for army or civilian purposes.

Two Japanese Taken at Short Wave Station

Police reported they have in custody two Japanese who were allegedly operating a short wave station across from 210 Booth St.

The report was made first about 10:30 and police rushed to the scene.

Actions of Japanese Are Investigated

Police this afternoon said they were investigating reports that Japanese had been seen lurking in bushes near the water tank at Diamond Head circle.

They were also investigating a report that Japanese at a tea house at Alewa Heights had been seen using high power telescopes.

All Sampo: Ordered Detained at Kewalo

Col. M. L. CRAIG, USA, today ordered all sampans to be detained at Kewalo basin.

Two Radio Stations Close

Radio station KGMB and KGO left the air voluntarily at the request of military authorities at 11:00 this morning.

Report of Man Amok Is Proved False

The report of a man running amok with a knife at 1346 King St. was determined to be false.

Sabotage Reported in Waikiki Area

Sabotage of an undischarged nature was reported on Oahu Ave. Investigation proved that it was the owner of the house removing personal belongings.

100 Trucks Respond For Volunteer Duty

More than 100 volunteer tractors assembled at the police grounds under the auspices of committee of the city's emergency council at 11 this morning. One detachment was sent to Hickam field for maintenance and evacuation duty. A number of families there were reported to be in distress.

A. M. Bettencourt Residence Struck

A bomb struck the residence of A. M. Bettencourt, 2822 Bunko Ave., an employee of the United Oil Co., injuring his wife and completely demolishing one side of residence.

Evacuees Taken To The University

Several truckloads of evacuees from Hickam field, mostly women and children, were taken to the University of Hawaii today.

The national guard armory on Hooeh St. was being equipped to receive wounded persons.

Comment Reserved By Kita

Four armed policemen were dispatched at 10:15 this morning to guard the Japanese consulate, 1168 Nuuanu St.

Two uniformed guards patrolled outside the consulate grounds, on Nuuanu Ave. and Kukul St. and two ununiformed men were stationed on the grounds.

Nago Kita, Japanese consul general here, said this morning that he thought the bombing of Honolulu was "maneuvers" by the U. S. forces here.

When informed that there were casualties, he remained unconvinced that the bombing by Japanese planes had actually taken place.

"I was very late this morning and didn't get up till late," he said, at the Japanese consulate where he was asked for a statement by The Star-Bulletin.

"I heard quite a lot of noise this morning but I never imagined that this was a real bombing," Mr. Okuda said.

Japanese Told To Remain Calm

The Honolulu United Japanese society, through representatives of affiliated organizations throughout the city, is urging the local Japanese community of development including the blackout tonight and the closing of schools Monday.

The Japanese people are being urged to remain calm.

A program sponsored by the society was held at 8:30 this morning at the Kokua theater, when 200 Japanese emergency medical volunteers were presented their certificates for completion of their basic first aid training.

Gas Company Men Are Standing By

Twenty trucks and 40 employees of Honolulu Gas Co. are standing by ready to repair any gas main breaks.

The trucks are standing by at Kukul St. near at Diamond Head and another at 1429 Damon tract have been repaired.

Mr. Bartlett, international family, expressed surprise and disbelief when told that "this bombing" of Japanese banks was taken place this morning. It was reported at the consul's office.

Farrington High To Be a Hospital

Farrington high school was taken over by the army this morning as a hospital.

Mattresses Taken

Police were assisting army engineers in taking mattresses from a furniture store at Sevenside and Puhou St.

Fire Hose Delivered

Trucks of the Honolulu Construction & Draying Co. were delivering lengths of firehose about the city where they were being connected to hydrants and firemen were stationed at the hydrants.

Water is O. K.

Fred Oertl, manager, city-county board of water supply, said the water supply has not been tampered with, contrary to rumors.

He added that all such reports coming to his office are being checked.

PEARL HARBOR TODAY

The modern US Navy can be seen nowhere more clearly than at Pearl Harbor, home of the largest Naval command in the world — the Pacific Fleet. This command covers an area of nearly 102 million square miles, or approximately half the surface of the Earth, with over 240 major ships, 2,000 aircraft and more than 275,000 Navy and USMC personnel.

It is also the home of the nine separate commands that provide the defensive and offensive arms of the Pacific Fleet, among them Commander Submarine Force Pacific, controlling the more than 20 submarines homeported at Pearl; and the Naval Surface Group MIDPAC with nearly 24 Pearl Harbor-based craft to perform the tasks of fueling, repairing and supplying our ships at sea and in port. Commander Third Fleet, with headquarters on Ford Island, heads up anti-submarine warfare activities and fleet training.

A glance at this nearly 6,000 acre harbor tells you that the Navy cares about the environment. With the aid of Construction Battalion (SEABEE) personnel and the most modern environmental protection equipment available, the men and women at Pearl Harbor have succeeded in making the Naval installation a model of how a large industrial type complex can operate with a minimal adverse effect on the local environment.

A closer look reveals that the mighty battleship of World War II is gone, replaced by the fast moving aircraft carrier task force. Important elements of these task forces are the modern destroyers. They perform anti-submarine and anti-air warfare functions with a variety of armaments and detection equipment. Of the 24 ships homeported at Pearl Harbor, 5 are destroyer type.

Of course there is more to the Navy than ships alone. In Hawaii there are some 24,000 highly trained, highly skilled men and women working in more than 70 widely varied fields, from aviation mechanic to nuclear technician. These young men and women perform the jobs that keep the Navy on the move both ashore and at sea. They keep the highly sophisticated weapons, communications and defense systems in perfect working order to keep our nation alert and strong. These men and women also have the opportunity to avail themselves of the beauty that the Hawaiian Islands, undoubtedly the world's finest vacation spot, has to offer.

But the rich natural beauty of this tropic island paradise is contrasted by the stark reality of the USS Arizona and Utah Memorials, "battleship row," and other grim reminders of World War II to be found throughout the harbor.

There is more history displayed around these islands, stemming from the long Polynesian tradition that still forms the cultural base of life in modern Hawaii.

And the Navy is a vital part of that life. For example, Navy uniformed and civilian payrolls and purchases exceeded \$995 million in 1987 alone. Of the more than 12,600 Navy and Marine Corps families on Oahu, about 5,000 live in private housing. Of course, the Navy supplies housing for those families requesting it, with nearly 7,600 units available.

The Navy also provides weather information, search and rescue facilities, fire prevention assistance and medical aid among others, to the community at large.

Presently valued at more than \$1.5 billion, Pearl Harbor is the Navy's most important base in the Pacific. From a small coaling station it has grown into a busy city-in-itself complete with shops, churches, clubs, restaurants, recreation facilities and offices. It serves as the hub of activity for Hawaii's Navy and Marine Corps personnel and their families.



HUB OF
MILITARY
ACTIVITY
IN THE
PACIFIC

PACIFIC FLEET OPERATIONS

PACIFIC FLEET'S UNIQUE ROLE — Pacific Fleet forces, with their mobile air power, surface warships, and amphibious units with embarked Marines, are frequently the only forces that can be brought to bear quickly and effectively within its vast area of responsibility without dependence upon forward bases, overflights of foreign soil, landing rights or other support requiring the consent of a third nation.

Such forces can be brought close enough to an area of threat to provide an almost instantaneous reaction capability, while still avoiding any actual commitment. This increases the alternatives available in meeting a threat and — if power is to be projected ashore — makes possible greater control over the use and amount of force applied.

AIR WARFARE — The aircraft carrier, with its mix of fighter, attack, antisubmarine, reconnaissance and early warning (AEW) aircraft and its escort of destroyers, forms a carrier striking force, the modern successor to the old battle squadron. The carrier task force, the core of the Fleet's sea control force, can exercise a purely psychological peacekeeping influence, gain and hold local air superiority in an area of conflict, carry out patrol, combat or evacuation duties or conduct disaster relief operations.

Long range, shore based patrol planes supplement seaborne antisubmarine warfare (ASW) forces and carry out other vital reconnaissance missions.

Navy and Marine aircraft, based ashore or afloat, can defend ground forces from air attack and function as extensions of those forces by providing close air support to infantry operations.

SUBMARINE WARFARE — A key contribution to America's nuclear deterrent arsenal is the nuclear-powered fleet ballistic missile (FBM) submarine with its undersea-launched Polaris and Poseidon missiles. Each FBM submarine carries 24 of these potent weapons, targeted in accordance with plans developed by the Joint Chiefs of Staff.

The natural element of the nuclear submarine — the high seas — covers more than 70 per cent of the globe. Free of the need to surface, "nukes" can remain largely undetected in the ocean depths, greatly reducing an enemy's ability to locate and neutralize them. This high likelihood of survival ensures America of a "second strike" capability in the event of an enemy first strike, raising the consequences of nuclear attack against the U.S. to unacceptable for that enemy.

SURFACE WARFARE — Surface warships, including all types of ships in the Pacific Fleet except aircraft carriers, submarines and submarine support ships, with their mix of weapons, including both conventional guns and torpedoes and guided missile operations as combat-ready units of the Third and Seventh Fleets.

Consisting of cruisers, destroyers, frigates, amphibious, service and mine ships, the surface ships perform a variety of tasks as wide as the ship types suggest. They maintain a constant state of readiness to engage enemy aircraft, surface ships and submarines in order to keep sea lanes open.

Service ships keep other units of the Fleet mobile and independent of shore bases by supplying them with food, fuel and equipment necessary for extended operations. Because the surface ships maintain a high degree of operational readiness, they continue to introduce new weapons, and are always developing more effective tactics and strategy for engaging the enemy at sea, they are considered to be the backbone of the Pacific Fleet.

ANTI-SUBMARINE WARFARE — The advent of nuclear-powered missile-launching submarines has made ASW one of the Fleet's most complex vital tasks. This responsibility involves protection of the U.S. against the threat submarine-launched weapons.

Antisubmarine operations are based on precise teamwork between land-based air units, destroyers and "attack" submarines. The equipment employed embodies some of the most advanced, complex and sophisticated concepts and electronic technology known.

AMPHIBIOUS WARFARE — The ancient concept of amphibious warfare has undergone revolutionary change since WWII. The Pacific Fleet now operates many of the newest and fastest ships afloat.

The primary striking force in amphibious warfare is the Marine landing team, embarked with all necessary equipment aboard high-speed transports that can put ashore a unit by helicopter, landing craft, amphibious tractor in combination of these whenever and wherever the need arises. The Navy-Marine amphibious assault forces provide a quick response capability, permitting reaction in hours even hours, to developing situations.

READINESS HELPS PRESERVE PEACE — The strategy of a realistic deterrence requires modern and flexible naval forces in the Pacific and Indian Oceans that are ready and able to meet all challenges affecting world peace — the role of the United States Pacific Fleet.

VISITING THE USS ARIZONA MEMORIAL

The USS Arizona Memorial, which spans the sunken battleship USS Arizona, commemorates those who lost their lives on December 7, 1941. The National Park Service operates a Visitor Center where there is a free program that includes a 20 minute movie about the Pearl Harbor attack and a shuttle boat ride to the Memorial. Programs are operated from 8:00 A.M. - 3:00 P.M. daily except for Thanksgiving, Christmas and New Year's Day. Tickets are handed out on a "first come - first served" basis starting at 7:30 A.M. Because the demand to tour the memorial is great, there is often a considerable wait (sometimes as long as two to three hours). Each person must obtain their own ticket. Passengers must be 45" tall to ride the shuttle; shirts and footwear are required and children must be accompanied by an adult. Recorded park information phone number is (808) 422-0561. The Visitor Center

also has a museum and a bookstore which is open from 7:30 A.M. - 5:00 P.M. The bookstore is operated by the Arizona Memorial Museum Association, a non-profit organization, which donates their proceeds to the park. The association offers books, flags, post cards, memberships and other various information pertaining to December 7, 1941 and the USS Arizona Memorial. The Arizona Memorial Museum Association may be contacted by calling (808) 422-5905 or 422-5664.

The Arizona Memorial Visitor Center can be reached via city bus #20 from Waikiki, private bus companies, rental car (though parking is limited) or through a commercial tour company. Arizona Memorial Shuttle Bus phone number is 926-4747. If driving a car, take H-1 West past the airport to the Arizona Memorial/Stadium exit. Follow signs to the Arizona Memorial Visitor Center which is approximately 1 1/2 miles.

SUPPORTING OUR COMMUNITY

Visitors

According to Hawaii Visitors Bureau, Pearl Harbor is Hawaii's second most popular tourist attraction with more than one million people visiting in 1977 via Navy and commercial tour boats, organizational tours and during open house events.

A total of 1,522,635 persons visited Pearl Harbor and the Arizona Memorial in 1987. Navy boats carried

1,387,343 passengers, a record number, while commercial boats from Honolulu brought another 322,922 visitors into the harbor for sightseeing. Since the Memorial was dedicated on Memorial Day, 1962, more than 17 million people have paid their respects to the men and memory of those who died at Pearl Harbor on December 7, 1941.

Navy and Marine Corps Contribute to Charity

The Navy and Marine Corps occupy a significant position in Hawaii in more ways than defense and employment. For example, the Navy and Marine Corps take an active part in supporting local charitable organizations. Navy and Marine Corps forces contribute the largest single donation to Hawaii's Combined Federal Campaign annually. In 1987 Navy and Marine Corps personnel and their families contributed

\$9,916,668, more than 53 per cent of the money raised by Federal agencies in Hawaii. In addition, the Mardi Gras celebration, an annual musical stage performance produced by Navy, Marine and Coast Guard officers' wives, raised over \$14,500 for 23 local military and civilian charities. An internal drive for the 1987 Navy Relief Fund generated an additional \$500,000 in funds to help Navy and Marine Corps families.

Participation in Community Events

The Navy participates in many community events each year including the December 7th ceremony, Kamehameha Day Celebration, Merrie Monarch Festival, Armed Forces Day, Memorial Day, Independence Day, Molokai Makahiki, Carole Kai Bed Race, Great Aloha Run, International Festival of the Pacific,

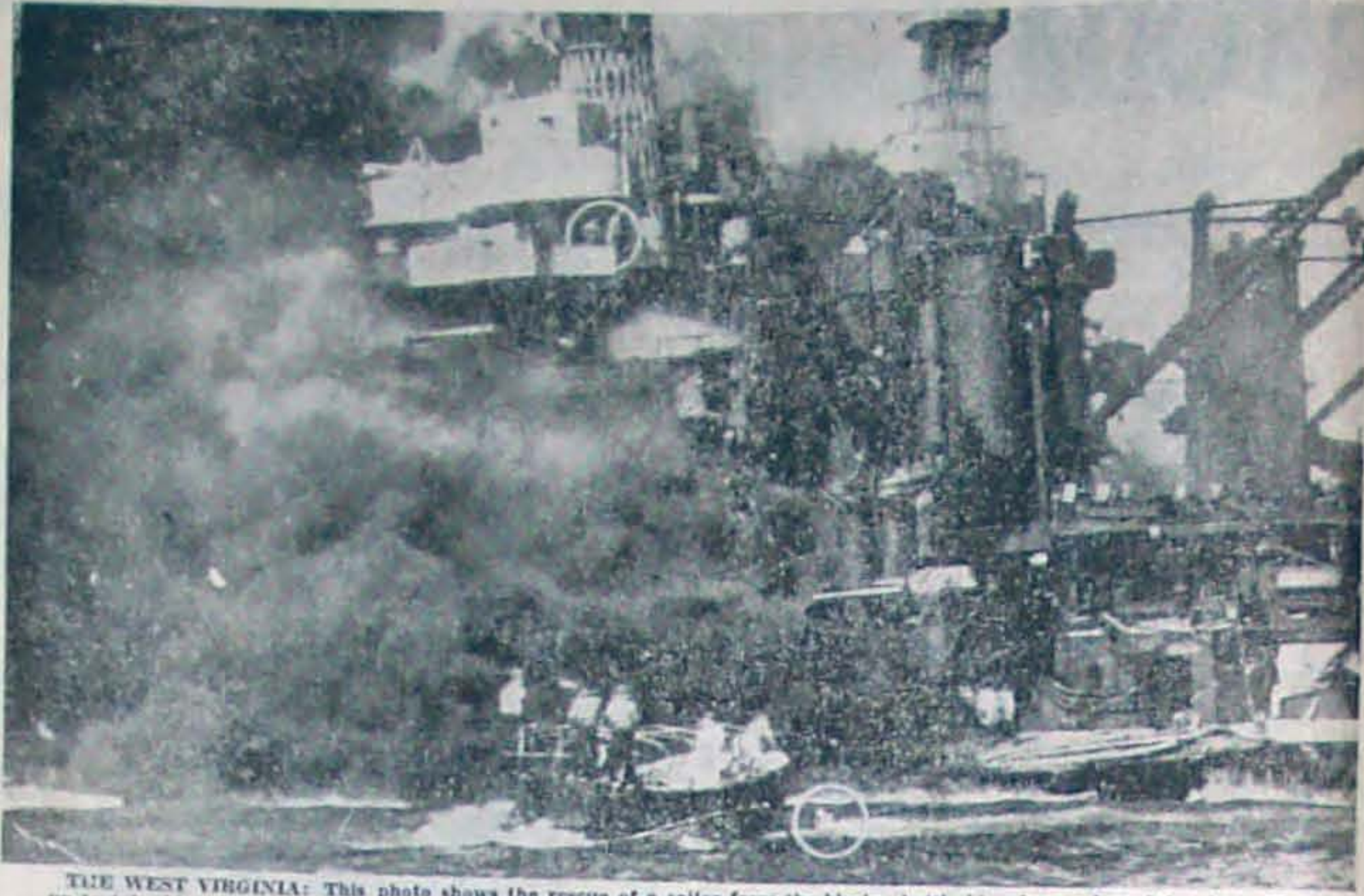
Aloha Week, Veterans Day, Combined Federal Campaign and Navy League activities. The Navy also supports many athletic activities and groups, some of which are the Pro Bowl, Hula Bowl, Hawaii Open Golf Tournament and the International Billfish Tournament.

Ford Island Aviation

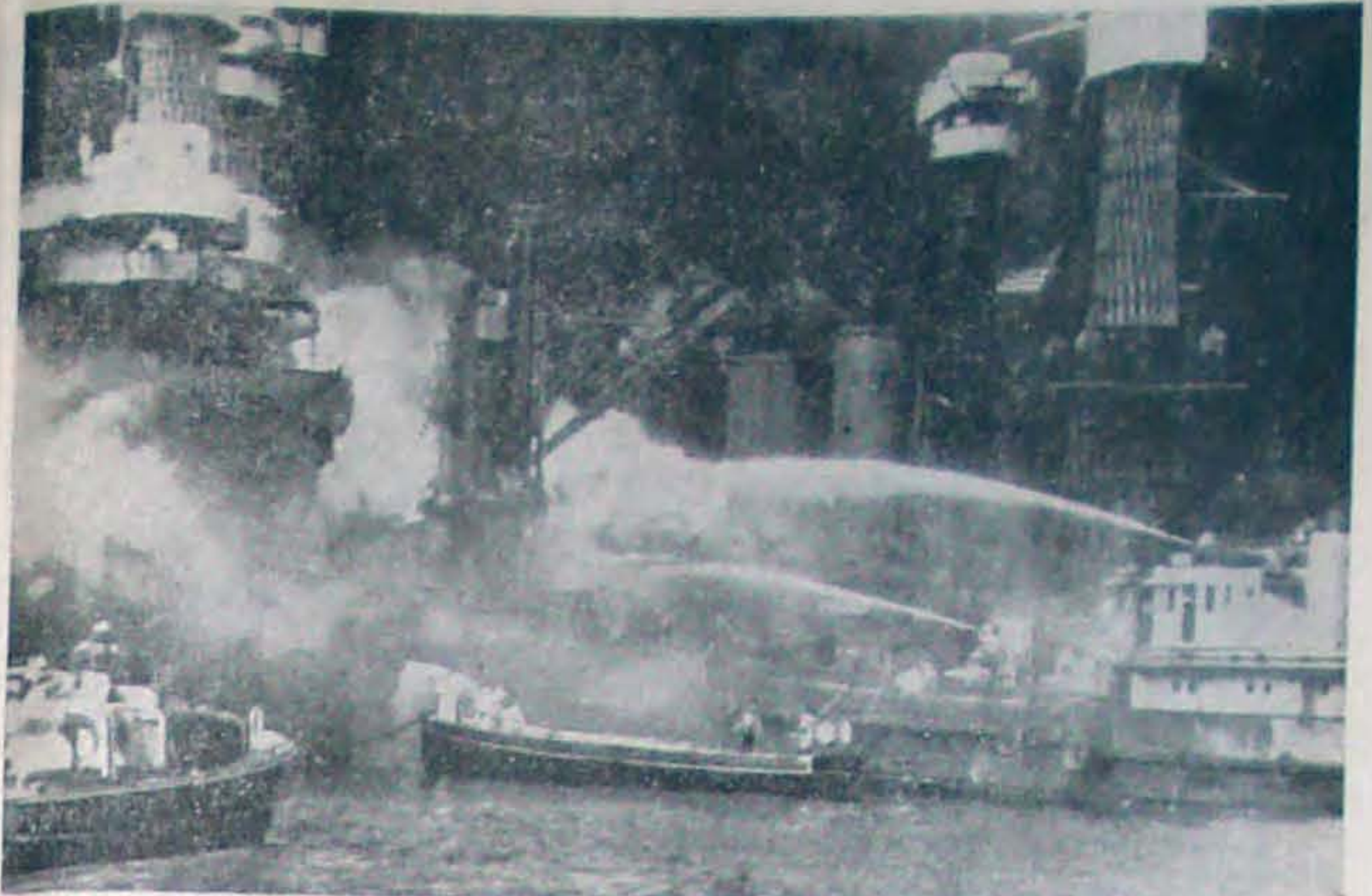
The Navy opened the Ford Island airfield for civilian light aircraft training in February 1970 to promote safety by relieving congestion at Honolulu

International Airport. The operation is supervised by Navy air controlmen working for the State of Hawaii in their off-duty hours.

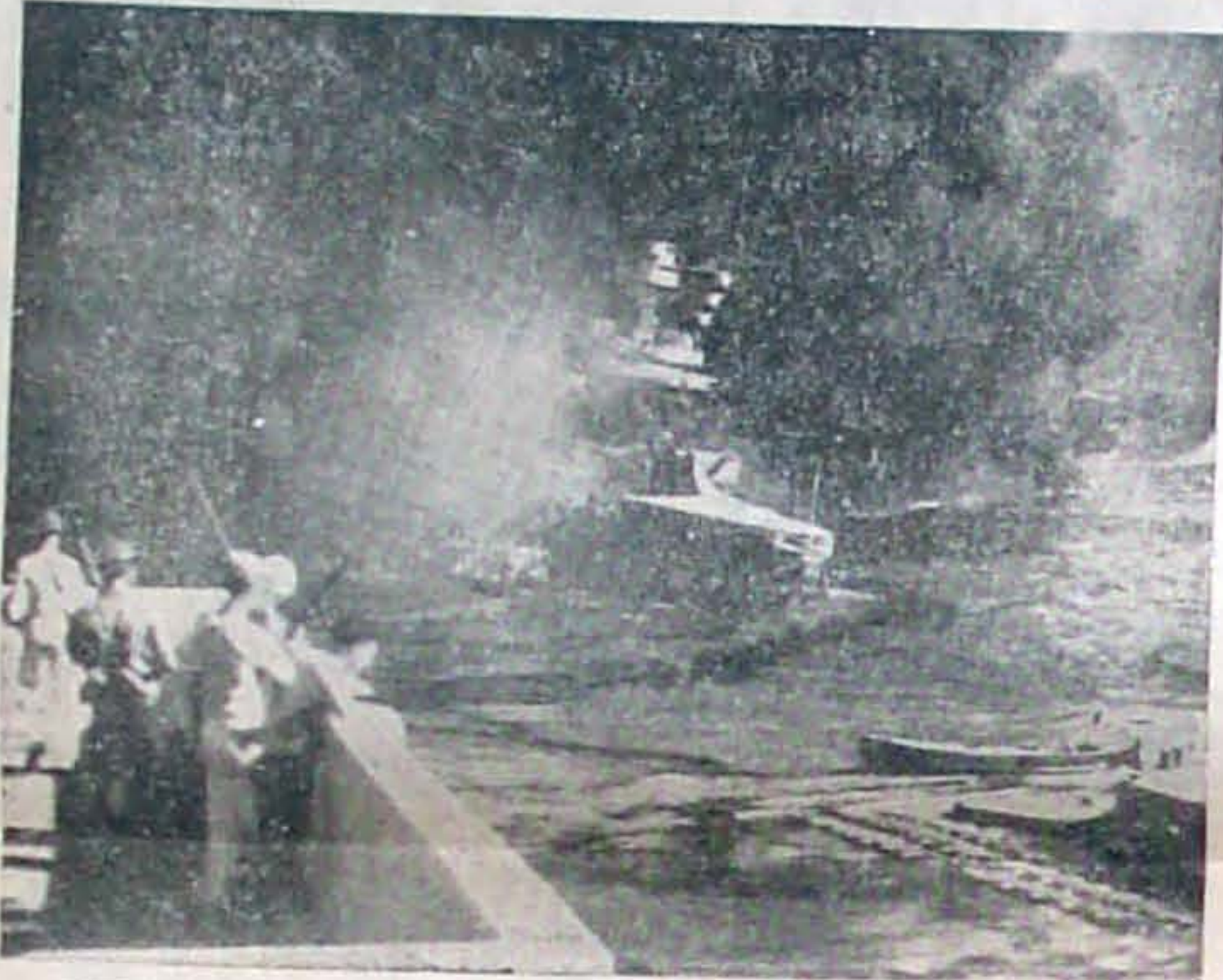
Navy Releases Striking Pictures of Japanese Attack on Pearl Harbor



THE WEST VIRGINIA: This photo shows the rescue of a sailor from the blazing battleship. A navy launch has just pulled up to take him (lower circle) out of the water. Notice the two men (upper circle) still at their posts on the superstructure of the blazing dreadnaught. The story of the West Virginia is continued in the pictures at the right and the center below.



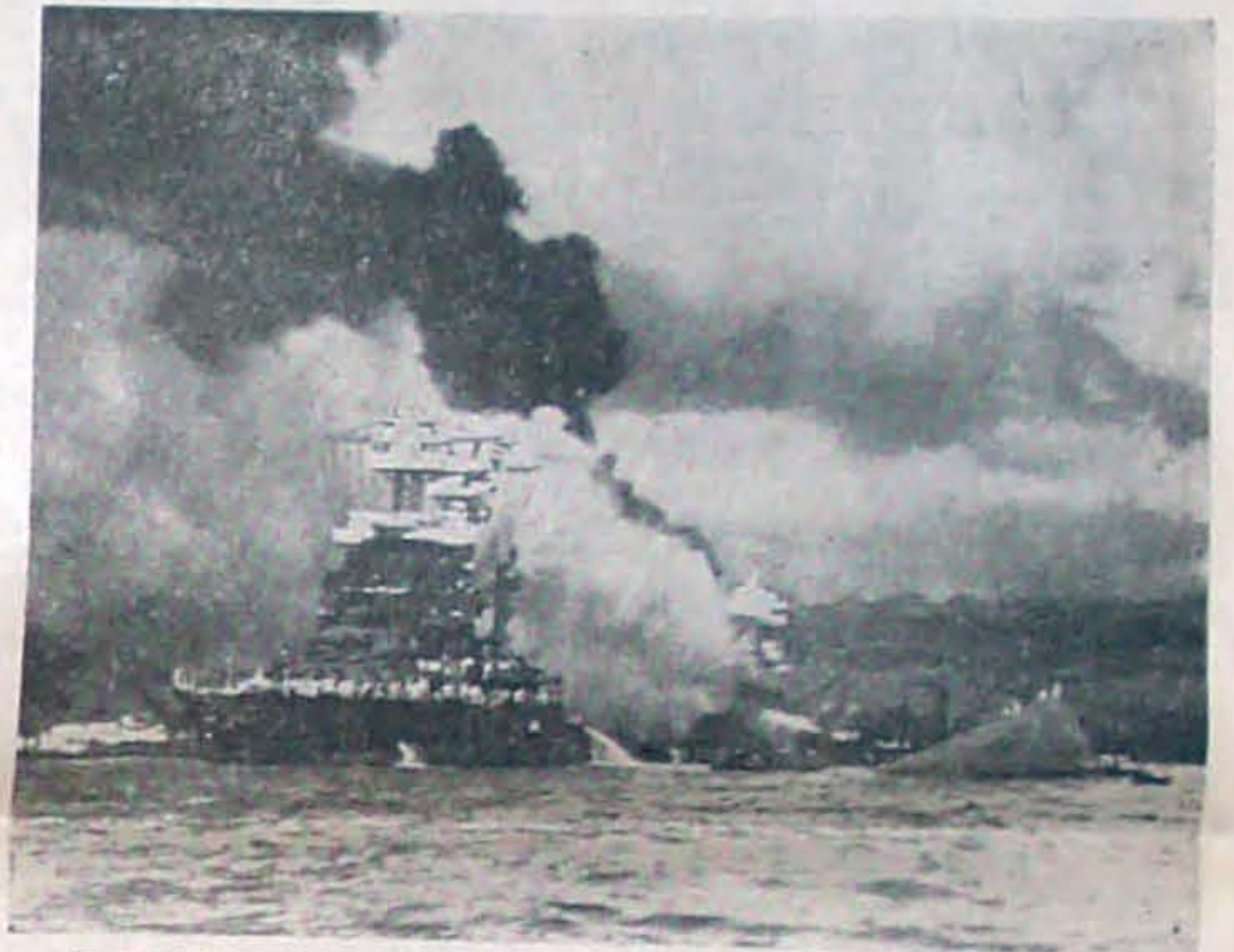
UNDAUNTED BY DANGER: Explosions were frequent as the great battleship West Virginia was burning from the effects of Japanese bombs during the "sneak" attack of last December 7, but U. S. sailors manned the hoses in boats that approached close to the blazing inferno in efforts to extinguish the flames. Notice the Stars and Stripes still waving from the vessel.



THE CALIFORNIA: As her crew clambered over her sides to comparative safety, the United States battleship California sank slowly into the mud and muck of Pearl Harbor. Smoke almost conceals the hulk of the capized Oklahoma, at the extreme right of photo.



ON THE BOTTOM: The 31,500-ton West Virginia is here shown resting on the harbor mud. Note the wrecked planes atop the gun turret at the right and in the right corner. The Tennessee is dim in the background.



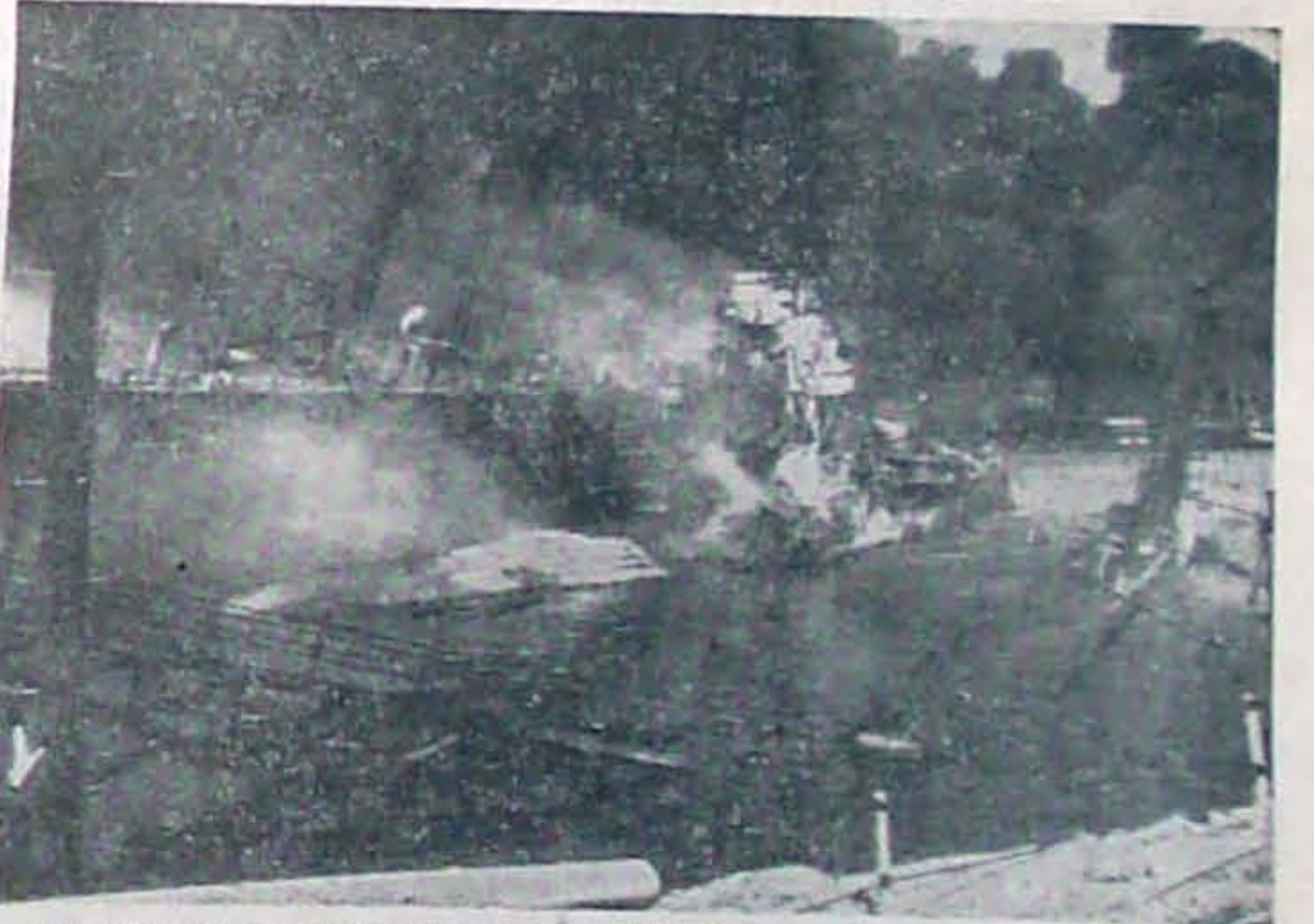
THE MARYLAND: This 31,500-ton battleship was damaged only slightly, and was one of the first ships to rejoin the fleet after repairs. The Maryland was moored inboard of the Oklahoma, which capized (right) as a result of the Japanese bombing attack.



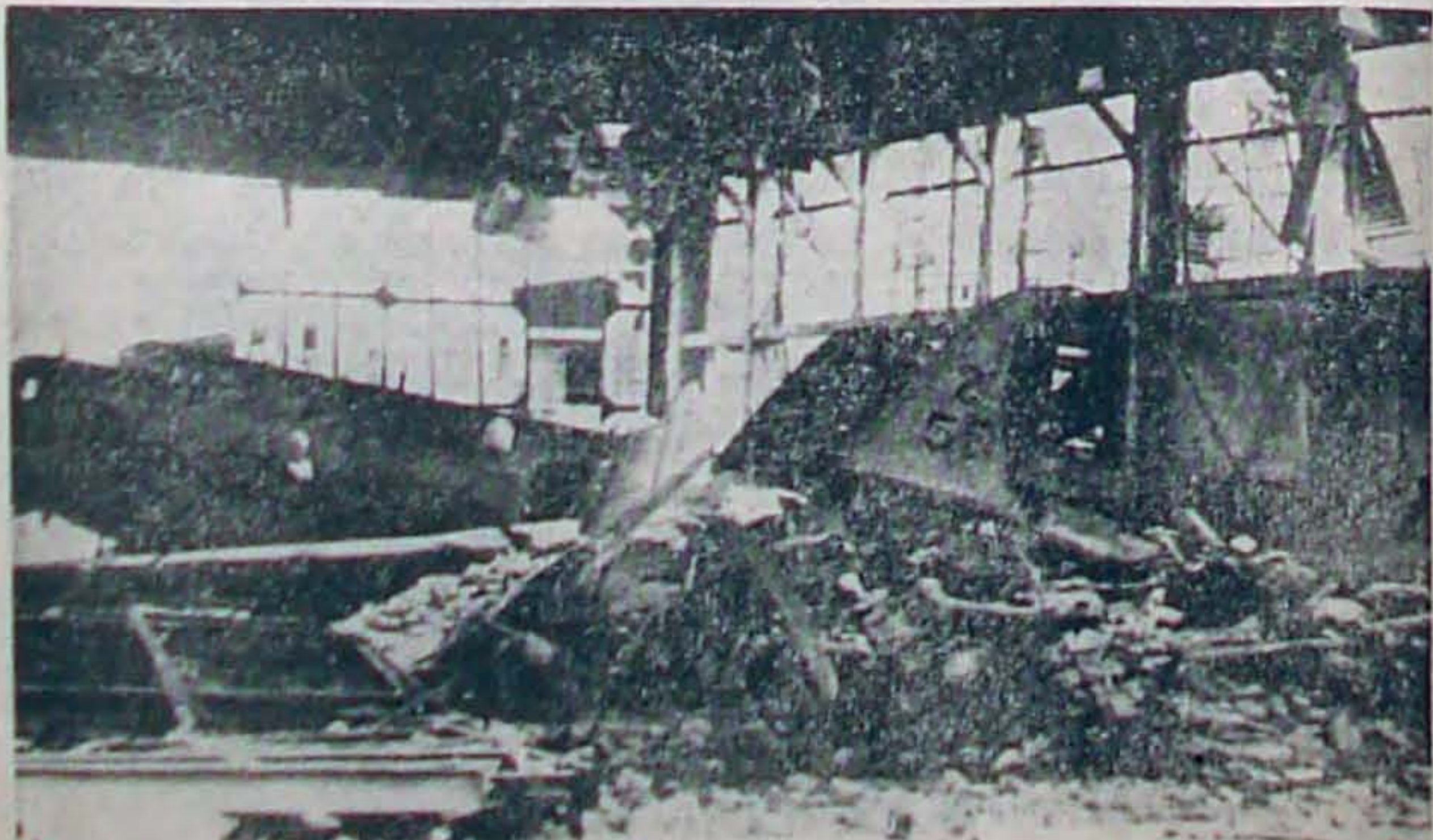
THE ARIZONA: And beyond her (center) the Tennessee and (left) the West Virginia. This picture indicates how the ships were lying close together at the hour of the sky assault. The Arizona was sunk, Tennessee damaged, West Virginia severely damaged.



A BOMBER'S REMAINS: Taken by surprise from the air without a declaration of war, even while peace talks were proceeding in Washington, the American air arm was caught off guard, as shown by this and the lower pictures.



THE SHAW: This 1,500-ton destroyer was hit by three bombs, which exploded her magazines and sheared off her bow. It lay a twisted wreck in the floating drydock at Pearl Harbor, part of which (right) is under water, the other side listing badly.



HANGAR WRECKED BY BOMBS: This is one of the pictures from Hickam field, Hawaii, which was subjected to the Japanese subterranean aerial bombardment at the same time as was the naval base at Pearl Harbor. The wreckage strewn about the area around by this photograph is mute evidence of the completeness of the preparations made by the Japs.



FLAME AND SMOKE FILL SKY: explosion had just sent flames and smoke high into the air as the photographer was preparing for this shot to be used in the naval officials in an official report on the disaster. The ground crews in most instances were taken just as they were by surprise as were the officers and men of the battleships and destroyers.

OWI Releases Navy Pictures, AP Wirephoto Sends Them West

ALL the pictures on this page were received through the wirephoto service of the Associated Press and rushed to The Spokesman-Review for publication in connection with today's release of the long-awaited Pearl Harbor report. There were many other hitherto unpublished and unreleased photographs taken from the official navy files, but on this page (plus page 1) The Spokesman-Review is publishing the most graphic and dramatic. These photographs provide some of the most striking news pictures developed by the war to date.